



[Trouble viewing images? View online version](#)

News and Updates. September 19, 2019- issue # 26

 [Visit Website](#)

 +1 (416) 736-2100  
Ext 20544

## Migration and resilience in urban Canada-Immigration et résilience en milieu urbain



Hi Everyone,

September brings the beginning of the school year when the pace of activity suddenly accelerates. This is also true for the partnership. Please **SAVE THE DATE** for the next partnership meeting that is tentatively planned for January 23, 2019 in Windsor. We anticipate that members of working groups and research projects can meet on either Wednesday, January 22, 2019 or Friday, January 24, 2019. Confirmation of the dates and more details will follow shortly.

There is lots of news on the KM front. A public event is being organized by the York Region and the Toronto city networks at York University on the morning of November 29, 2019. Planning is well underway for a discussion of practitioners' local concerns and strategies for supporting international students that will build on the panel discussion in [Kitchener-Waterloo](#). Naolo and Yomna have also been busy improving the website. Please read the KM news since we really need your help contributing to the improved website.

I also want to warn everyone that the **FINAL ROUND** of template requests will be announced in early October. Please watch for news.

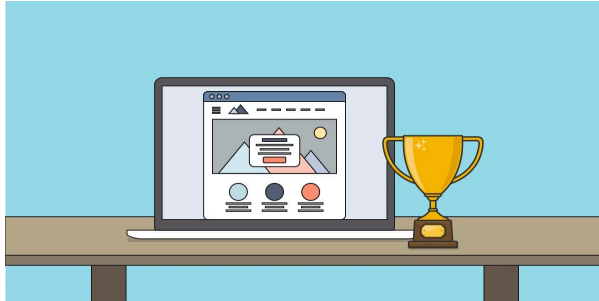
There are many comings and goings at the partnership. It is my pleasure to welcome two new co-investigators; Dr. Michael Haan of Western University and Dr. Deborah McPhee from Brock University. Their expertise in quantitative sociology and entrepreneurial studies will benefit the partnership. [Read more about them](#)

And now, the bittersweet news about people going: Naolo Charles is leaving the partnership to take a full-time position as the Director, Communications and Public Affairs, for the Canadian mentoring partnership (CMP), a new organization funded by the federal government to promote youth mentorship in Canada. It is a tremendous opportunity for Naolo and a real loss for BMRC-IRMU. Naolo will finish his work at the partnership on Sept. 20. It is impossible to enumerate Naolo's many contributions to the partnership, but he certainly succeeded in convincing everyone that KM begins as a research program is conceived, not only when the findings are available. Two post-doctoral fellows, whose energy, enthusiasm and innovative ideas are the backbone of the partnership, have also left their positions. Dr. Marshia Akbar at York University is

Cheers

Valerie

## Knowledge Mobilization News



### Website redesign

The secretariat has been busy redesigning the partnership's website. The objectives of this redesign are twofold: 1) Making the information on the website more accessible by following visual design professional standards. 2) Adding new essential sections that will help research teams share and archive their work more effectively.

[The Homepage](#) was redesigned to provide an easier access to the most important sections.

[The publication page](#) was redesigned to provide a visual access to important publications including a new [report page](#) that will include executive summaries for each report. [The conference page](#) was also redesigned to provide a quick overview on all the important events and sessions organized by the partnership.

[An individual page](#) has been created for the biography of each partnership member. Finally, [the research project pages](#) have been redesigned to offer a quick overview of the goals and outputs of our research projects.

Partnership members will soon be offered the opportunity to customize their biography pages and research project page content.

### Executive summary guidelines

The Secretariat invites all research teams to write executive summaries for their reports. Executive summaries will help readers quickly understand your results and it will help us translate your findings into multiple layers of KM products. Executive summaries are also needed for the translation of reports in both official languages. We have prepared an executive summary guideline document to help you achieve this.

[Executive summary guidelines](#).

### KM Plan Template

The secretariat can help research teams develop KM initiatives for their projects. We have developed a simple template that research teams can use to start thinking about their key messages and their KM strategies.

[KM template](#).

Get to know our research projects and our researchers!



### "Neighbourhood spaces and Migrant Resilience: A comparative study of three neighbourhoods in Ottawa-Gatineau"

The aim of this qualitative study is to examine the role of neighbourhoods in shaping migrants' resilience. In particular, the focus is on how the social and spatial environment at the neighbourhood level (services/amenities, demographics, housing, transportation, employment opportunities, community organisations/associations, equity and inclusion, discrimination, safety, etc.) influences the settlement and integration experiences of migrant groups.

#### What are the preliminary research results?

Our preliminary analysis is focusing on the factors that facilitate and/or hinder newcomers' and immigrants' resilience relating to (1) the spatial dimensions/built environment of the neighbourhoods and (2) the social dynamics/community relations. Among the most significant issues emerging from the findings, we note more specifically: the relatively central location of the neighbourhoods, easy access to transportation, the amenities available (parks, services, ethnic stores, etc.), and especially the diversity of the local population as supportive factors; among the hindering factors, most commonly mentioned were issues of neglect and disrepair of infrastructure and buildings, limited access to amenities and programs/social spaces, negative representations of the area, and issues with crime and/or policing.

Please, click [here](#) to learn more on this project.

---

**John Shields, Professor, Department of Politics & Public Administration, Ryerson University**



John has been teaching at Ryerson for some 31 years and is a past Director of CERIS, has served as an Interim Director of the Ryerson Centre for Immigration and Settlement, and was Managing Editor of the Journal of International Migration and Integration (2009-2012). He is currently Board Chair of ACCES Employment, a non-profit employment agency specializing in immigrant employment in the GTA, with a budget of some \$25 million and serving over 35,000 clients a year.

Aside from the work he has been engaged in on the BMRC-IRMU project John's recent research has been focused around a number of themes including employment precarity, the changing role of the non-profit sector (including its role in settlement) and the political economy of social innovation (in particular the critique of social impact bonds as a new policy tool). See [here](#) for more information on John.

## Announcements

### 22ND METROPOLIS CANADA CONFERENCE

The 22nd Metropolis Canada Conference is now accepting proposals for workshops, roundtables and poster presentations. The 2020 edition of the conference will be taking place at the RBC Convention Centre Winnipeg, Manitoba from March 19-21, 2020.

[Click here](#) for more information on the call for proposals.

### "Inclusion" – Annual Forum on Measuring Identities November 21-22, 2019 – Gatineau, QC

The Canadian Institute for identities and Migration (a division of the Association for Canadian Studies) will be holding the third edition of its annual forum on Measuring Identities entitled "Inclusion", November 21-22, 2019 at the Four Points by Sheraton in Gatineau, Quebec. [Click here](#) for more information on the call for proposals.

## Other Important Information-Autre Information Importante

### BMRC-IRMU Online Platforms:

[Website](#)

[Twitter](#)

[Facebook](#)

[YouTube](#)

### For more information about this newsletter:

Naolo Charles

Knowledge Mobilization Officer

Building Migration Resilience in Cities Partnership

Hours: Monday afternoon, Tuesday, Wednesday, Friday afternoon

York University

4700 Keele St.

Kanef Tower, 803

Toronto, ON M3J 1P3

416-736-2100 Ext 20544

naolo@yorku.ca

 Like this issue? [Forward it to a friend](#)



Subscribe

Past Issues

Translate ▼



4700 Keele St, Toronto, ON M3J 1P3

<http://bmrc-irmu.info.yorku.ca> | [bmrcirmu@yorku.ca](mailto:bmrcirmu@yorku.ca) | +1 (416) 736-2100

Copyright © 2016 Building Migration Resilience in Cities.

You are currently signed up to Company's newsletters as: [. To unsubscribe click here.](#)

This email was sent to <<Email Address>>

[why did I get this?](#) [unsubscribe from this list](#) [update subscription preferences](#)

BMRC-IRMU · 4700 Keele St, Toronto, ON · North York, On M3J 1P3 · Canada

