




[Trouble viewing images? View online version](#)

News and Updates. January 30, 2020- issue # 28

 [Visit Website](#)

 +1 (416) 736-2100
Ext 20544

Migration and resilience in urban Canada-Immigration et résilience en milieu urbain



Hi Everyone,

A belated happy new year! I am looking forward to the next partnership meeting in Windsor on January 23 and 24, 2020. The public forum promises an exciting discussion of university and college supports for international students. There will be opportunities to learn about the work of the New Canadians' Centre of Excellence in Windsor and chances for researchers to discuss how their projects can contribute to the work of our partners.

It is my pleasure to introduce [Shehnaz Fakim](#), the new Research Project Manager for BMRC-IRMU who will work with everyone to coordinate partnership activities and assist with KM. Shehnaz has over 25 years of experience in training and organization development mainly in health care internationally and in Ontario. Fully bilingual in English and-French, Shehnaz brings years of experience in research projects in health care, a long track record as proven leader of effective teams, and certification in project management to her work with the BMRC-IRMU Partnership. You can reach her at sfakim@yorku.ca I am also thrilled to report that Yomna Elazony, our indefatigable KM Work Study Assistant, completed her degree successfully in December. We are very lucky that she is working one day each week during the transition.

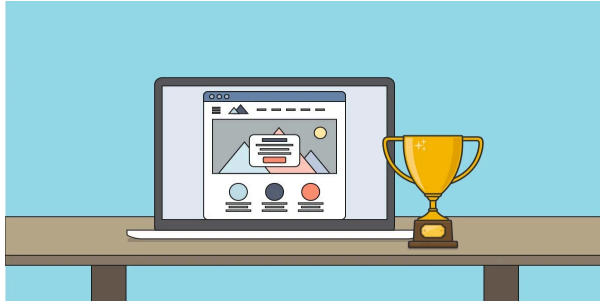
Please check the KM News to learn about new resources and reports.

The Executive Committee has been busy reviewing proposal templates. See their report below.

I will be out of the country until July, 2020. As a Visiting Research Scholar at the Academic Research Collaboration, the Graduate Center, City University of New York, I am looking forward to productive discussions with new colleagues, time to write, and opportunities to renew my love affair with New York City. The move itself has already tested my resilience.

Cheers
Valerie

Knowledge Mobilization News



As policymakers, educators, and the public turn their attention to the growing numbers of international students in Canada, the partnership has released two timely and important reports. The [first report](#) by Jolin Joseph summarizes national trends in the admission of international students to post-secondary institutions in Canada along with comments about the challenges facing international students and strategies for helping

them overcome these obstacles by speakers at a public forum held in Kitchener-Waterloo. In the [second report](#), Marshia Akbar analyses confidential data from IRCC to document provincial trends in the growing numbers of international students, their educational trajectories, and their transitions to permanent residence.

Get to know our research projects and our researchers!



"Enhancing the resilience of edu-immigrants by applying the concept of intelligent careers and involving regional stakeholders. "

Researchers: Duncan Lam, Francine Schlosser, and Gerry Kerr, University of Windsor

More than one-half of the international students studying in Canada plan to apply for permanent residency. The OECD noted that 75 percent of these "Edu-immigrants" indicated the opportunity to work in Canada after graduation was essential. As a result of their twin pursuits, Edu-immigrants reflect the needs of both international students and skilled or economic migrants. The former does not require special services other than those necessary to fulfill their educational journey, while the latter qualifies for publicly-funded services reserved for new immigrants. Yet, Edu-immigrants are left to fend for themselves while simultaneously pursuing a post-secondary education and preparing themselves for employment opportunities and settlement.

secondary institutions. As well, 10 interviews were conducted with campus, business and newcomer settlement partners.

Arthur et al.'s (1995) Intelligent Career Framework has all the elements that can build resilience in the careers of Edu-immigrants. Edu-immigrants arrive in Canada with an established "Know-Why" (goals, values and understanding). Some even come equipped with most of the "Know-How" (information, and hard and soft skills). Those lacking in the Know-How are seeking out and finding the help they need from their post-secondary educational institution. However, some essential "Know-Hows" are still inaccessible to international students due to their immigration status. Furthermore, what Edu-immigrants are sorely lacking is the "Know-Whom," stemming from a lack of opportunities for part-time work, volunteering activities, mentorships, and professional networking events. The dearth of social ties decreases the rate of success in securing meaningful post-graduation careers, and it also impedes the development of resilience in the Edu-immigrant.

Hindia Mohamood, Director /Directrice, Ottawa Local Immigration Partnership / Partenariat Local d'immigration d'Ottawa And Community Co-chair in Ottawa City Networks



Hindia Mohamoud has close to twenty years of experience with building community solutions through research, partnership development, and program design. She is currently the director of the Ottawa Local Immigration Partnership, where she is responsible for facilitating the establishment and implementation of community-wide vision and strategy for improving the settlement and integration of immigrants in Ottawa. Previously, she worked as the director of research at the Social Planning Council and as a director of impact and investment at United Way/Centraide Ottawa. Hindia's academic background is varied – she holds a Master's degree in economics from the University of Ottawa and various diplomas in business, management, technology, and communication. She is also fluent in four international languages, including both official languages. Hindia is widely engaged with local social development process and activities. For example, she is a member of the City for all Women's Initiative (CAWI) and a regular volunteer at a local food bank.

[Click here](#) for more information on Hindia.

Highlights

Many of our BMRC partners attended the 87th ACFAS Conference - Engaging the Knowledge-Society Dialogue From May 27 to 31, 2019, the Université du Québec en Outaouais (UQO) and the Cégep de l'Outaouais welcomed more than 4,800 delegates to implement the knowledge-society dialogue and highlight the contribution of communities in the international Francophonie to research issues. Beyond the simple dissemination of knowledge, the dialogue involved an exchange, mutual understanding and appropriation of knowledge for the benefit of all societies.

Executive Committie

The Executive Committee reviewed seven templates and allocated funding to three of them. [Click here](#) to learn more. Watch for news about the templates that are still under review.

As always, I want to thank the members of the Executive Committee;utama, Damaris, Henry and Stephan for the time they devoted to reviewing the templates, everyone who took the time to comment on the templates, and Camila Bonifaz who keeps track of the committee's deliberations.

Announcements

22ND METROPOLIS CANADA CONFERENCE

The 22nd Metropolis Canada Conference: Beyond 2020: Renewing Canada's Commitment to Immigration will be held from March 19-21 in Winnipeg. Three of BMRC partners have been selected to present at this prestigious conference on Immigration. Below is a list of presentations that have been selected:

Organized by Marshia Akbar, a workshop entitled Migrants' Employment Challenges: A Comparative Analysis will highlight recent shifts in industrial structure in Canadian cities, bring together academics, researchers and service providers to discuss how local economies influence newcomers' employment outcomes and assess the effectiveness of the services and programs of immigrant-serving organisations.

Four papers will be presented during this workshop:

1. Industry of Employment by Immigration Status: A Comparison of Major Cities in Ontario and Quebec by Valerie Preston, Principal Investigator, Building Migrant Resilience in Cities-Immigration et resilience en milieu urbain (BMRC-IRMU) partnership and York University and Marshia Akbar, Canada Excellence Research Chair (CERC) Program in Migration and integration, Ryerson University
2. Divergent Outcomes in Employment Attainment among Women & Men from Immigrant Communities in Ottawa-Gatineau by Brian Bay, Associate Professor, University of Ottawa
3. Unlocking Gender-based Barriers to Inclusion for Francophone, Immigrant and Refugee Women, Manolli Ekra, Bilingual Senior Coordinator, Policy and Research, Ontario Council of Agencies Serving Immigrants (OCASI)
4. Labour Market Experiences and Immigrant Resilience in the Interprovincial and Bilingual Context of Ottawa-Gatineau, Canada's National Capital Region by Luisa Veronis, Associate Professor, Geography, Environment and Geomatics, University of Ottawa and Christina Gabriel, Associate Professor, Political Science, Carleton University

The other papers that BMRC-IRMU affiliates will present at the conference include:

- Between inclusion and exclusion: The role of neighbourhood spaces in fostering/hindering resilience among newcomer families by Luisa Veronis, Associate Professor, Geography, Environment and Geomatics, University of Ottawa
- Ouvrir le dialogue: échanges sur la cohésion communautaire dans un contexte de diversité parmi les francophones d'Ottawa by Luisa Veronis, Associate Professor, Geography, Environment and Geomatics, University of Ottawa
- A Gender-Responsive Approach to Migrant Resilience by Jenna Hennebry Co-Founder/Senior Research Associate, International Migration Research Centre, Associate Professor, Balsillie School of International Affairs , Graduate Program Co-ordinator, Communication Studies, Program Co-ordinator, Women and Gender Studies, Wilfrid Laurier University

Summer Institute in Migration Research Methods – May 26-June 6, 2020

Summer Institute in Migration Research Methods – May 26-June 6, 2020 - Application Deadline: Monday, February 10, 2020

The UC Berkeley Interdisciplinary Migration Initiative is delighted to host the 3rd annual Summer Institute in Migration Research Methods (SIMRM), to be held at the University of California, Berkeley campus from May 26-June 5, 2020. [Click here](#) for more information.

Press Release

Have a look at this important [report](#) discussing the settlement challenges facing newcomers who are not in the workplace.

Other Important Information-Autre Information Importante

BMRC-IRMU Online Platforms:

[Website](#)

[Twitter](#)

[Facebook](#)

[YouTube](#)

For more information about this newsletter:

York University
4700 Keele St.
Kaneff Tower, 803
Toronto, ON M3J 1P3
416-736-2100 Ext 20544
bmrcirmu@yorku.ca

Subscribe

Like

Past Issues

[Share it to a friend](#)



Translate ▼



4700 Keele St, Toronto, ON M3J 1P3

<http://bmrc-irmu.info.yorku.ca> | bmrcirmu@yorku.ca | +1 (416) 736-2100

Copyright © 2016 Building Migration Resilience in Cities.

You are currently signed up to Company's newsletters as: [To unsubscribe click here.](#)

This email was sent to <<Email Address>>

[why did I get this?](#) [unsubscribe from this list](#) [update subscription preferences](#)

BMRC-IRMU · 4700 Keele St, Toronto, ON · North York, On M3J 1P3 · Canada

