




[Trouble viewing images? View online version](#)

News and Updates. March 9, 2020- issue # 29

 [Visit Website](#)

 +1 (416) 736-2100  
Ext 20544

## Migration and resilience in urban Canada-Immigration et résilience en milieu urbain



Hi Everyone,

I am thrilled to report that the recent partnership meeting in Windsor on January 23 and 24, 2020 was a tremendous success. Check out the information in this newsletter about the public forum and the successful meetings that followed. I am grateful to all participants, especially, the organizing committee of Sandhya Shanker, Reza Shahbazi, Duncan Lam, Francine Schlosser, and Shehnaz Fakim, who arranged a very exciting forum and many opportunities for fruitful discussions. We owe special thanks to the Odette Centre and its staff and the staff at the New Canadians' Centre of Excellence (NCCE) who welcomed the partnership very warmly. Thank you.

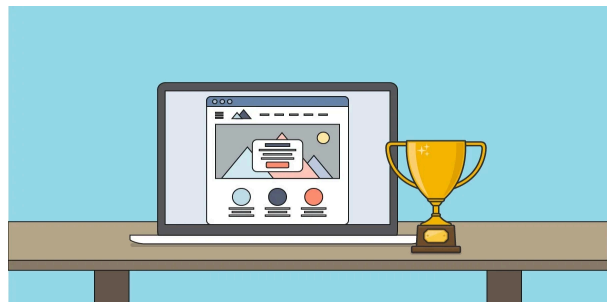
Please check the KM News to learn about an exciting new report concerning the challenges posed by recent upsurges in the number of refugee claimants entering Canada irregularly.

The Steering Committee also met to review plans for the website, newsletter, and the release of reports that are designed to enhance awareness of partnership research in policy, practitioner and academic circles and heighten its public profile. See the report below.

The Executive Committee met last week to review proposal templates and travel requests for 22nd Metropolis Canada Conference; Beyond 2020: Renewing Canada's Commitment to Immigration. More information will be shared in the next Newsletter.

As I enjoy a balmy winter in New York City, I hope everyone can see glimmers of spring on the horizon.

Cheers  
Valerie



As policymakers, educators, and the public turn their attention to the growing numbers of migrants and international students in Canada, the partnership has released a timely and important report on the Canada-U.S. Safe Third Country Agreement (STCA) and its application across Canada.

Dr. [John Shields](#), Professor, Ryerson University and Zainab Abu Alrob, PhD Candidate, Policy Studies, Ryerson

University have published a report on The Safe Third Country Agreement, Irregular Migration and Refugee Rights: A Canadian Policy Challenge. Please click here for the [executive summary](#) and the [full report](#).

[Zoom interview](#)

Luisa Veronis was invited to the NCC Urbanism Lab to speak on 'The urban geography of race and culture', a conference held as part of Black History Month. During this event, Luisa spoke about the Neighbourhood study in Ottawa-Gatineau. Over 200 people attended this event. For more information, please check the link in [French](#).

Get to know our research projects and our researchers!



**"The resettlement experiences of Syrian refugees in Gatineau" by [Anyck Dauphin](#):**

More than three years have passed since the first wave of Syrian refugees arrived. The purpose of this project is to shed light on the local characteristics that have contributed to but also limited the overall resilience of the Syrian refugees and their families arrived in Gatineau since 2015-2016. For more information please [click here](#)

---

**We are pleased to feature [Andrea Bobadilla](#)**

Andrea is a Research Coordinator for the Promoting Collective Action Among Immigrant Communities with the Building Migrant Resilience in Cities partnership, under the leadership of Dr. Rupaleem Bhuyan at University of Toronto.

[Click here](#) for more information on Andrea.

## Highlights

The last **BMRC/IRMU Partnership Meeting** was held on January 23 and 24, 2020 in Windsor.

Members participated in the public forum on **The Role of Post-Secondary Institutions in Building International Student Resilience: The First of a Series of Forums Examining Nation-Building**, which brought together a myriad of representatives on the panel.

It was an animated engagement and fruitful discussion that described the needs and challenges of International Students and how they are being supported by post-secondary institutions in Windsor.

Please [click here](#) for an article on International Students by Dr. [Francine Schlosser](#) and [click here](#) for the newspaper article about the event.

Luisa Veronis, BMRC Co-Investigator was interviewed by Radio-Canada Windsor at this event. Luisa spoke about reinforcing international students' resilience. The [link](#) to the interview is here (in French)



During the afternoon session, BMRC members were grouped to discuss opportunities for alignment of projects under six themes

- Gender and Intersectionality – Jenna Hennebry
- International Students – Margaret Walton-Roberts/ Sutama Ghosh
- Structures and Institutions (Includes policies) – John Shields/ Luisa Veronis/ Michaela Hynie/
- Status and Transitions – Rupaleem Bhuyan/ Jill Hanley
- Local Impacts: Municipalities, Community and Neighborhood – Brian Ray/ Mireille Paquet/ Chedly Belkhodja/ Gerry Kerr
- Individual, Family, and Household Resilience – Amber Gazso / Jelena Zikic

On January 24, 2020, BMRC Members were welcomed at the [New Canadians' Centre of Excellence Inc.](#) Members toured this community based, direct-service agency which assists, supports and promotes the full and equitable participation of immigrants and refugees in all aspects of social, cultural and economic life in the Windsor-Essex Region. They provide a wide range of settlement, youth, employment, language training and childcare services.



## Steering Committie

At its February meeting, the Steering Committee reviewed proposed improvements in KM practices. The committee discussed proposed revisions of the website that will simplify navigation and enable faster updates, a calendar for newsletter content, and a schedule for producing the newsletter and a plan for releasing reports and other documents. The Steering Committee's comments will be reviewed and incorporated by the KM Committee. We ask for everyone's help informing partnership members about these proposals.

A proposal for another public forum about international students focusing on the roles of each level of government and non-governmental organizations was presented. There was general support for another event, tentatively scheduled for the third week of September; however, the location still needs to be determined. Shehnaz will facilitate a discussion of this proposal by partnership members doing research about international students and report at the next Steering Committee meeting. Watch for the minutes of the Steering Committee for more details about its activities.

## Community Partner



### Pierre Constant Charles

Pierre-Constantin Charles has a background in social service and holds an MBA from UQAM's School of Management Sciences. He has been involved in community and social work for more than thirty years as an organization manager for newcomers and as a consultant in diversity management and philanthropic activities. The issues of territorial and human development are at the heart of his professional actions. His current role as planning consultant and head of community relations at the United Way of Greater Montreal has allowed him to develop a particular expertise in social and territorial analysis, project evaluation and dialogue.

## Announcements

- The Windsor-Essex Chamber of Commerce has submitted a resolution on Investing in Ontario's International Undergraduate Student Entrepreneurs to the Ontario Chamber of Commerce. Please [click here](#) for more information
- In order for us to send you the 2019-20 SSHRC Report, we need the latest contact information from your organization. Please send the updated contact information to [bmrcirmu@yorku.ca](mailto:bmrcirmu@yorku.ca) by March 16, 2020.

## Other Important Information-Autre Information Importante

### BMRC-IRMU Online Platforms:

[Website](#)

[Twitter](#)

[Facebook](#)

[YouTube](#)

### For more information about this newsletter:

York University  
4700 Keele St.  
Kaneff Tower, 803  
Toronto, ON M3J 1P3  
416-736-2100 Ext 20544  
[bmrcirmu@yorku.ca](mailto:bmrcirmu@yorku.ca)

Subscribe

Past Issues

Translate ▼

Like this issue? [Forward it to a friend](#)



4700 Keele St, Toronto, ON M3J 1P3

<http://bmrc-irmu.info.yorku.ca> | [bmrcirmu@yorku.ca](mailto:bmrcirmu@yorku.ca) | +1 (416) 736-2100

Copyright © 2016 Building Migration Resilience in Cities.

You are currently signed up to Company's newsletters as: [To unsubscribe click here.](#)

This email was sent to <<Email Address>>

[why did I get this?](#) [unsubscribe from this list](#) [update subscription preferences](#)

BMRC-IRMU · 4700 Keele St, Toronto, ON · North York, On M3J 1P3 · Canada

