



[Trouble viewing images? View online version](#)

News and Updates. April 20, 2020- issue # 30

 [Visit Website](#)

 +1 (416) 736-2100  
Ext 20544

## Migration and resilience in urban Canada-Immigration et résilience en milieu urbain



Hi Everyone,

I hope everyone is surviving COVID-19 in good health and successfully making the transition to working remotely, supervising home schooling, and social distancing. Although everyone's work has been disrupted, discussions about an online format for the next partnership event are underway. Watch for more details in the next newsletter.

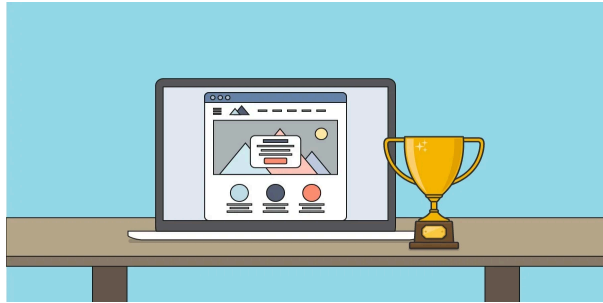
The partnership is also benefiting from new participants. Nahid Sultana who is finishing her degree under the supervision of Jill Hanley has joined the partnership as a Research Assistant with the Windsor City Network. I also want to thank our indefatigable Communications Assistant, Beverly George who is finishing her degree in Global Health and Yomna Elazony, a gifted KM Assistant, who has a full-time job that takes advantage of her graphic design and information science degree. I know everyone joins me in thanking them for all their contributions and wishing them the very best as they leave the partnership at the end of April.

Please check the KM News to learn about Policy Previews, short policy briefs. The series has started with two issues about the challenges facing international students. IRCC is also helping us reach a large audience by sending news of partnership publications to its large listserv

The Executive Committee has also announced that another project will be allocated funding. See the report below.

At this terrible and terrifying time, I am heartened by the cacophony when New Yorkers thank essential workers by banging pots, clapping, whistling, hooting and hollering and by the rainbows adorned with the phrase "Ça va aller bien" that are springing up in Quebec. Best wishes for continued good health.

Cheers  
Valerie



Here are some tips for [Communicating with non-academic audiences](#).

**Policy Preview** on International Student Pathways and Supports in Canada- Lessons from Toronto- York Region [Series 2](#) by Jolin Joseph- please click [here](#) for Series 1

Other publications during the last months:

1. [COVID-19 and Global Human Health Resources](#) by Margaret Walton-Roberts
2. [Dreams of better life can come with a cost: For some international students, their education opens doors to jobs and a new life in Canada. For others, it leads to abuse and shattered dreams](#) by Margaret Walton-Roberts
3. [Indian immigrants top newcomers to P.E.I., filling labour shortages, investing in business](#) by Sutama Ghosh
4. [Foreign students say they 'have no choice' but to work more than their permits allow](#) by Sutama Ghosh

Get to know our research projects and our researchers!



**The Role of Churches in the Resilience Process of the Haitian Asylum Seekers and Syrian refugees.**

Dr. [Frédéric Dejean](#), Professor in the Department of Religious Sciences at the University of Quebec in Montreal (UQAM)

The role of religious groups with immigrants is investigated by researchers, both in sociology of religion and immigration studies. One of the main intuition of this field of research is that religious groups play a key role with immigrants. Nevertheless, such a topic has been insufficiently studied in Quebec. Please click [here](#) for more information.

---



refugees' relationship.

University, in Montreal.

She holds a PhD in Political Science from the University of Ottawa. She is interested in citizenship issues and the governance of immigration at the city level. She is involved in a research project examining the interactions between government and civil society in the development and implementation of newcomer settlement and integration policies and programs in Quebec. She also conducts research on immigrants' and

She has collaborated in various studies on immigrant settlement and access to housing for immigrants and other newcomers across Canada.

## Highlights

### **Syrian refugee resettlement and the role of local immigration partnerships in Ontario, Canada** by [Margaret Walton-Roberts](#)

During the peak of the Syrian refugee “crisis” in 2015 and early 2016, the Canadian Federal Government responded with a push to drastically increase the number of Syrian refugees it planned to resettle. The resulting Syrian Refugee Resettlement Initiative (SRRRI) put to the test Local Immigration Partnerships (LIPs), a form of place-based policy that had been in place since 2008 where communities collaborate in the support, development, and execution of local immigration and refugee resettlement plans. Our research team argued that the arrival of Syrian refugees during the SRRRI presented a pressing need to evaluate the role played by LIPs in coordinating refugee resettlement services and responses with multiple service providers and institutions. To do so, in 2016 we obtained a Targeted Research grant on Syrian Refugee Arrival, Resettlement and Integration co-funded by the Social Sciences and Humanities Research Council (SSHRC) and Immigration, Refugees, Citizenship Canada (IRCC). Specifically, our aim was to document and assess how local governments and stakeholders mobilized and managed the rapid response to the SRRRI by examining the role of local immigration partnerships (LIPs) in the province of Ontario, which received close to 50% of Syrian refugees resettled in Canada from 2015-2016. How did LIPs support local stakeholders and community mobilization in the SRRRI response? What constraints did they face? Please click [here](#) for more information

We are pleased to highlight **Yomna Elazony** and **Beverly George**, Work Study students at BMRC-IRMU.

#### **Yomna Elazony**

Being part of the BMRC team has been a great experience for me. It improved my graphic design skills and gave me a chance to put my knowledge into practice. Everyone was very supportive and helpful during my year at BMRC. This work-study position helped me gain a lot of skills that I found it very beneficial when it came to applying for jobs after graduation. I'm glad I got to meet all the wonderful people on the team and got the chance to learn a lot from each and every one of them.

**Beverly George**

Joining the BRMC team was an invaluable experience. I felt as if I formed a work family in the time I was there. As a work/study student, I benefited a lot in my time with BMRC. I fine-tuned my administrative skills and learnt how to work and communicate within a research team.

In addition, balancing this job while in school helped to improve my time management skills immensely. All in all, I had such a wonderful experience with the team. Everyone was so accommodating and helpful during my time here. Being a part of the BMRC team has been the best experience. I will miss everyone dearly.

## Executive Committee

The Executive Committee is pleased to announce that funding has been allocated to Antoine Bilodeau and Jean-Philippe Gauvin at Concordia University. Their project, Sounding Different, but Still Equal? Assessing Discrimination against “Audible Minorities” in Urban and non-Urban Settings in Quebec and Ontario will investigate discrimination based on accent in Toronto and Montreal. Please access the proposal [here](#). More announcements will follow soon.

## Community Partner



**Reza Shahbazi**, Executive Director, New Canadians' Centre of Excellence Inc.

For over twenty years, Reza Shahbazi has worked to improve the outcomes of immigrants and refugees in Canada with a focus on two interrelated areas: experienced program and service delivery at the community level and policy development at the provincial and national level.

Reza is a founding member and Executive Director of New Canadians' Centre of Excellence Inc. (NCCE Inc.) which annually serves over 7,000 newcomers to Windsor and Essex County. It provides services that are critical to the settlement and integration of newcomers including: language training, employment services, settlement and inclusion services, youth programs, childcare, and

seventy schools and various library branches.

He is a member of the Board of Directors of the Hotel-Dieu Grace Healthcare, member of Conference Board of Canada – Leaders Roundtable on Immigration (LRI), member of the Executive Committee of the Pathways to Prosperity and a past member of the National Settlement Council (NSC) and past Chair of Windsor-Essex Local Immigration Partnership (LIPs). He has also served as a member, Regional Director, Vice-President and President of the Board of Directors for the Ontario Council of Agencies Serving Immigrants (OCASI).

## Announcements

- [Immigration Waterloo Region Weekly](#), April 14, 2020
- [Canada's changing coronavirus border policy exposes international students' precarious status](#), March 19, 2020.

## Other Important Information-Autre Information Importante

### BMRC-IRMU Online Platforms:

[Website](#)

[Twitter](#)

[Facebook](#)

[YouTube](#)

### For more information about this newsletter:

York University  
4700 Keele St.  
Kaneff Tower, 803  
Toronto, ON M3J 1P3  
416-736-2100 Ext 20544  
[bmrcirmu@yorku.ca](mailto:bmrcirmu@yorku.ca)

💡 Like this issue? [Forward it to a friend](#)



[Subscribe](#)

[Past Issues](#)

[Translate](#) ▼



4700 Keele St, Toronto, ON M3J 1P3

<http://bmrc-irmu.info.yorku.ca> | [bmrcirmu@yorku.ca](mailto:bmrcirmu@yorku.ca) | +1 (416) 736-2100

Copyright © 2016 Building Migration Resilience in Cities.

You are currently signed up to Company's newsletters as: [. To unsubscribe click here.](#)

This email was sent to <<Email Address>>

[why did I get this?](#) [unsubscribe from this list](#) [update subscription preferences](#)

BMRC-IRMU · 4700 Keele St, Toronto, ON · North York, On M3J 1P3 · Canada

