




[Trouble viewing images? View online version](#)

News and Updates. June 29, 2020- issue # 31

 [Visit Website](#)

 +1 (416) 736-2100
Ext 20544

Building Migrant Resilience in Cities-Immigration et résilience en milieu urbain



Hi Everyone,

I hope everyone is surviving Covid-19 in good health. It was great to hear and see so many people in the town hall meeting. Please check the [Town Hall notes](#) for information about the next forum concerning international students. The Steering Committee will meet soon to decide how to move forward in the pandemic environment.

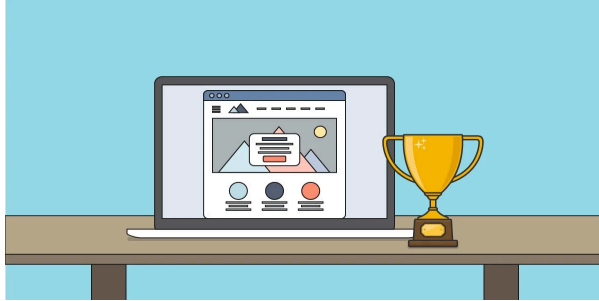
It is my pleasure to introduce Natasha Dixon and Farah Elazony who were hired recently through the Research at York (RAY) program. Fluently bilingual, Natasha will soon be in touch with many of you as she helps with publications and with updating the bibliography about immigrant settlement and resilience. You will also be hearing from Farah who is assisting with the digital aspects of KM, especially the website and social media. I know everyone welcomes their enthusiastic involvement in the partnership.

Please check the KM News below to learn about recent exciting publications, including a recent article in The Conversation by Jelena Zikic. Send information about upcoming events and resources to bmrcirmu@yorku.ca that you would like distributed.

The Executive Committee has also announced another project that has received funding. See the report below.

As summer arrives, I hope everyone has an opportunity to turn off their screens and enjoy the season. As people say in New York, stay safe and stay healthy.

Cheers
Valerie



Research Digest on [Syrian Refugee Resettlement and Local Immigration Partnerships](#) by [Margaret Walton-Roberts](#) - Click [here](#) for the French version.

Other publications during the last months:

1. Research Report on [Resilience and The Immigration Settlement Sector: A consideration of the place of accountability and performance management](#) by Sharon Broughton & [John Shields](#).
2. Research Digest on [The Safe Third Country Agreement: Irregular Migration and Refugee Rights: A Canadian Policy Challenge](#) by [Zainab Abu Alrob](#) & [John Shields](#). Click [here](#) for the French version.
3. Research Digest on [Exploring the Relationship to Citizenship for Immigrant Women](#) by [Alexandra Charette](#). Click [here](#) for the French version.
4. [As city life is restricted by the COVID-19 pandemic, new residents find creative ways to manage](#), by [Jelena Zikic](#), (June 16, 2020).
5. [Coronavirus: Canada stigmatizes, jeopardizes essential migrant workers](#), by [Jenna Hennebray](#) (June 3, 2020).

Get to know our research projects and our researchers!



Stalled Mobility? Income Inequality and Intergenerational Relationships Among Newcomer South Asian and Chinese Households in York Region.

[Dr. Nancy Mandell](#), Professor of Sociology and Women's Studies at York University

Our research explores how newcomer youth, adults and senior Chinese and South Asians in York Region use family relations and multigenerational households to tackle many of the material, social and cultural settlement challenges they face. Economic marginalization leaves newcomer households vulnerable to income instability that in turn contradicts and threatens intergenerational mobility. For more information,



We are pleased to feature [Nahid Sultana](#), BMRC researcher and Windsor City Network Coordinator at the Odette School of Business, University of Windsor.

She is currently completing her PhD in Social Work from McGill University, Montreal, where her SSHRC funded study is measuring asset poverty and asset holding patterns of immigrants. She is involved in a research project exploring the involvement of institutions in matching immigrant newcomers and closing family businesses.

She holds an MSW from the University of Calgary and an MPhil degree in Public Administration and was a faculty member of the Department of Public Administration at the University of Rajshahi, Bangladesh. She worked as a research assistant at the CRCF (McGill University) and the Centre for Social Work Research and Professional Development (Faculty of Social Work, University of Calgary).

Highlights

Resilience and Immigration at the Neighbourhood Level by [Anna Goudet](#) and [Chedly Belkhodja](#)

The arrival of Syrian refugees in Canada from year 2015, followed by an increase in the number of asylum seekers arriving via Roxham Road in Quebec, has brought to the forefront the precarity and vulnerability in which refugees and asylum seekers find themselves upon their arrival in their society of settlement. In that context, the Table de concertation des organismes au service des personnes réfugiées et immigrantes (TCRI) and Centraide, set up the "Vivons nos quartiers" initiative in order to participate in the construction of welcoming and inclusive neighbourhoods. This initiative offers support based on three main aspects, always at the neighbourhood level: training for front-line workers, the establishment and support of communities of practice, and awareness-raising and citizen bridging activities (this last component has evolved over time to become a training for facilitators of citizen bridging activities). More information is available in [English](#) and in [French](#).

New collaborator at BMRC-IRMU



BMRC-IRMU is pleased to welcome Dr. Kyle Brykman as the new collaborator at Windsor City Network.

Dr. Brykman's research focuses on interpersonal team dynamics and employee voice. In particular, he is interested in how leaders can motivate employees to speak up with higher quality ideas and how to create and sustain highly effective teams, such as by building teams' resilient capabilities and helping teams successfully manage conflict.

Executive Committee

The Executive Committee is pleased to announce that funding has been allocated to [Deborah McPhee](#) at Brock University. Her project, [Fostering inclusive workplaces, resilient communities and protecting migrant rights in Canada's Emerging Cannabis Industry](#) will investigate the challenges of working with migrant workers, especially during the pandemic. Additional information from the Executive Committee is available [here](#).

Community Partner



Stephan Reichhold, directeur, *Table de concertation des organismes au service des personnes réfugiées et immigrantes (TCRI)*

[Stephan Reichhold](#) est le directeur de la Table de concertation des organismes au service des personnes réfugiées et immigrantes (TCRI) depuis 1989. À ce titre, il est responsable de la coordination et du développement du regroupement de 142 organismes communautaires œuvrant auprès des personnes réfugiées, immigrantes et sans statut au Québec.

Announcements

- [Margaret Walton-Roberts](#) participated in the webinar on [Return and Integration Challenges of Migrants during and post COVID 19](#), organized by Global Research Forum on Diaspora and Transnationalism, Delhi Post, India (June 17, 2020)
- Press release on "[We need more than hollow words.](#)" [After third migrant agricultural worker death in Canada](#), by [Jenna Hennebry](#) (June 23, 2020)
- CBC News on [More action needed to keep migrant workers safe, advocate says after cluster of Manitoba COVID-19 cases.](#), by [Jenna Hennebry](#) (June 4, 2020)
- Open Call Papers and Early Responses to COVID on [Migrant Farmworkers Face Heightened Vulnerabilities During COVID-19](#). Journal of Agriculture, Food Systems and Community Development, by [Jenna Hennebry](#) (May 26, 2020)

BMRC-IRMU Online Platforms:[Website](#)[Twitter](#)[Facebook](#)[YouTube](#)**For more information about this newsletter:**

York University
4700 Keele St.
Kaneff Tower, 803
Toronto, ON M3J 1P3
416-736-2100 Ext 20544
bmcirmu@yorku.ca

💡 Like this issue? [Forward it to a friend](#)



4700 Keele St, Toronto, ON M3J 1P3

<http://bmrc-irmu.info.yorku.ca> | bmcirmu@yorku.ca | +1 (416) 736-2100

Copyright © 2016 Building Migration Resilience in Cities.

You are currently signed up to Company's newsletters as: [To unsubscribe click here.](#)

This email was sent to <<Email Address>>

[why did I get this?](#) [unsubscribe from this list](#) [update subscription preferences](#)

BMRC-IRMU · 4700 Keele St, Toronto, ON · North York, On M3J 1P3 · Canada

