



[Trouble viewing images? View online version](#)

News and Updates. September 18, 2020- issue # 32

 [Visit Website](#)

 +1 (416) 736-2100  
Ext 20544

## Migration and resilience in urban Canada-Immigration et résilience en milieu urbain



Hi Everyone,

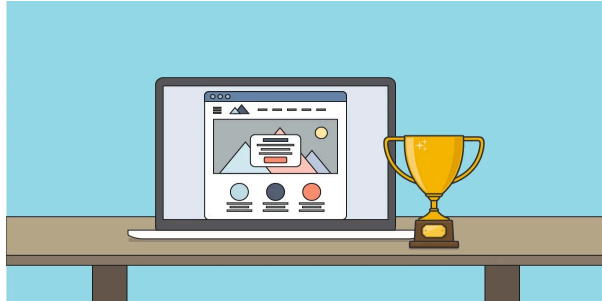
I hope everyone is well in these strange times. Following the Town Hall meeting in June, several members of the partnership submitted proposals to the recent Partnership Engage Grant competition to study the impacts of COVID-19 on newcomers. My thanks to members of the Executive Committee who reviewed proposals with very tight deadlines. I am excited to tell you that two webinars about the experiences of international students have been scheduled. The first webinar, [International Students and COVID-19: Experiences, Policies and Options](#) will take place on September 30, 2020 at 3PM and the second is scheduled for the OCASI Executive Director Forum on October 28 from 10:00 am - 11:30 am. We appreciate your help circulating information about both events. Plan to attend.

Thanks to the hard work of the KM Committee and the Project Research Manager, we have published several reports and research digests over the summer, so please check the KM News below. John Shield's report is an important review of policy responses to the COVID-19 issues facing temporary migrants and immigrants.

It is my pleasure to introduce Humayra Safa who has joined us through the Research at York (RAY) program. She will be in touch with many of you as she helps with publications and evaluating literature about immigrant settlement and resilience. You will also be hearing from Farah who is still assisting with the digital aspects of KM, especially the website. I know everyone welcomes their involvement in the partnership. We continue to work remotely, so please contact the Secretariat through email at [bmrcirmu@yorku.ca](mailto:bmrcirmu@yorku.ca)

As the autumn arrives, it is also time to say good-bye to Natasha Dixon who has worked very hard as a Communications Assistant. She improved our tweets in French and English, untangled the files on the Dropbox, and updated the bibliography about migration and resilience. The update will soon be available on the website. I know everyone joins me in wishing her well as she completes fourth year and applies to graduate school.

## Knowledge Mobilization News



### List of Research Reports published

1. [COVID-19, Migration and the Canadian Immigration System: Dimensions, Impact and Resilience](#) by [John Shields](#) and [Zainab Abu Alrob](#) - Click [here](#) for the French version.
2. [The roles of government and non-governmental actors in settlement and integration in Québec](#) by Paul Bacherrie by [John Shields](#) and [Valerie Preston](#) - Click [here](#) for the French version.

New Research Digests during the last months:

1. [Syrian Refugee Resettlement and Local Immigration Partnerships: Building Resilience into the immigrant and refugee settlement system](#) by [Margaret Walton-Roberts](#). French version is available [here](#)
2. [Redefining Accountability To Promote Settlement Sector Resilience](#) by Sharon Broughton (MA Public Policy & Administration) and [John Shields](#). Click [here](#) for the French version.
3. [Exploring Resilience Among International Students Attending Colleges in Greater Toronto Area](#) by [Sutama Ghosh](#). Click [here](#) for the French version.
4. [International Students: A Snapshot of Resilience Among International Students in Canada](#), [Margaret Walton-Roberts](#). French version is available [here](#).
5. [Enabling engagement within Francophone minority communities -FMCs: The role of francophone minority community spaces](#), by [Luisa Veronis](#). Click [here](#) for the French version.

Get to know our research projects and our researchers!



### Transformative Resilience – Lessons from Place-Based Migrant Collective Action in the Greater Toronto Area

[Dr. Rupaleem Bhuyan](#), Associate Professor, Factor-Inwentash Faculty of Social Work, University of Toronto and [Tenzim Chime](#), Undergraduate student, University of Toronto and Alisha Alam (MSW student, York University)

This participatory research project seeks to understand forms of transformative resilience to among migrant communities that come together to resist social and economic exclusion in Canada, while challenging transnational inequities produced by imperialism in their home countries. Under the guidance of a community advisory committee, we designed a case study approach to explore collective actions organized by people in the Tibetan community in the Parkdale neighborhood and among South Asian immigrant women living in Toronto's East Danforth neighborhoods. Through focus groups community members and migrant leaders working across multiple communities, we examine (i) how and why migrant communities organize (ii) how collective actions impact migrant communities and the host society; and (iii) what institutional factors can enable or impede collective action among migrant groups. While resilience scholarship emphasizes the capacity of migrants to overcome adversities faced pre- and post-migration, this research illustrates how migrant communities work together to link personal struggles to systemic inequities and to promote social change in ways that benefit members of their migrant communities, but also Canadian society a whole. A full report is forthcoming in the fall of 2020. For more details about this study, please click here please click [here](#) for more information.



We are pleased to feature [Palmer Taylor](#), PhD student in Socio-Legal Studies at York University.

Palmer is a PhD student at York University (Toronto, ON) in Socio-Legal Studies. His dissertation focuses on legal and policy narratives concerning net neutrality and the 2017 Restoring Internet Freedom Order. As a research assistant for the BMRC project (York Region branch), he primarily transcribed, coded, and analyzed interview data through NVivo.

**COVID-19, Migration and the Canadian Immigration System: Dimensions, Impact and Resilience** by [John Shields](#) and [Zainab Abu Alrob](#).

This report identifies, documents and assesses the many ways that the Novel Coronavirus (COVID-19) pandemic has been affecting migration, borders, immigrant populations, and Canada's immigration and settlement system between March, 2020 and June, 2020. COVID-19 does not, at one level, distinguish between citizen and non-citizen nor resident and non-resident. Yet deeply embedded societal discrimination and structural inequalities mean that COVID-19 has negatively affected groups like immigrants, women, visible minorities, the poor far more than others. The report is not exhaustive in terms of analysis or identification of issues, especially given that the pandemic continues to progress and evolve and its effects will take time to comprehend fully. Consequently, this review and analysis is inherently preliminary. Rather it provides a comprehensive initial overview of the challenges COVID-19 has created for migration, immigrants and settlement. While international cases are used, our focus is on the Canadian context. Click [here](#) for the French version.

## Community Partner



**Kwame McKenzie**, CEO, Wellesley Institute.

Kwame is the CEO of Wellesley Institute, a research and policy institute that works to improve health and health equity in the GTA through action on the social determinants of health. He is an international expert on the social causes of illness, suicide and the development of effective, equitable health systems. For more information, click [here](#).

## Other Important Information-Autre Information Importante

**BMRC-IRMU Online Platforms:**

[Website](#)

[Twitter](#)

[Facebook](#)

[YouTube](#)

**For more information about this newsletter:**

**Subscribe**

**Past Issues**

**Translate** ▼

York University  
4700 Keele St.  
Kaneff Tower, 803  
Toronto, ON M3J 1P3  
416-736-2100 Ext 20544  
bmrcirmu@yorku.ca

💡 Like this issue? [Forward it to a friend](#)



4700 Keele St, Toronto, ON M3J 1P3  
<http://bmrc-irmu.info.yorku.ca> | [bmrcirmu@yorku.ca](mailto:bmrcirmu@yorku.ca) | +1 (416) 736-2100  
Copyright © 2016 Building Migration Resilience in Cities.

You are currently signed up to Company's newsletters as: [. To unsubscribe click here.](#)

This email was sent to <<Email Address>>

[why did I get this?](#) [unsubscribe from this list](#) [update subscription preferences](#)  
BMRC-IRMU · 4700 Keele St, Toronto, ON · North York, On M3J 1P3 · Canada

