




[Trouble viewing images? View online version](#)

News and Updates. December 16, 2020- issue # 33

 [Visit Website](#)

 +1 (416) 736-2100
Ext 20544

Migration and resilience in urban Canada-Immigration et résilience en milieu urbain



Hi Everyone,

As the holidays appear on the horizon, I am happy to report that the BMRC-IRMU partnership has been busy since September. Two successful webinars about international students took place in September and October. In September, panelists discussed the impacts of COVID-19 on international students and the responses of higher education. Please check what our partners in Windsor and from the Canadian Federation of Students and the CBIE had to say about their experiences. In October, a second webinar at the OCASI Conference of Executive Directors examined the availability of services in the community for international students, comparing the Quebec and Ontario situations. Recordings and reports from these events are available [here](#). Watch for news of upcoming events from the International Students working group. The working groups looking at the resilience of the settlement sector and employers and migrant resilience have also been meeting to identify research directions for these topics.

Many partners are producing reports, research digests and policy previews. With the assistance of IRCC, many are attracting attention from researchers, policymakers, and commentators across Canada. There is continuing work to refresh the website and bring the French and English websites into correspondence. In January, partners are invited to participate in a KM training workshop about infographics. Please check the KM news below.

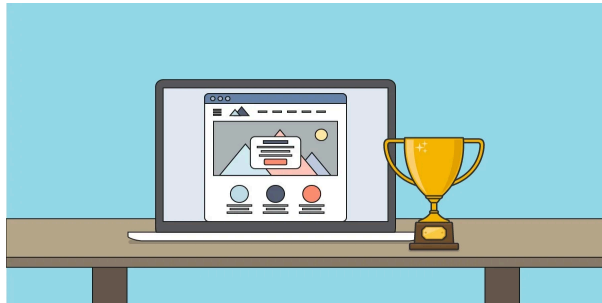
I am pleased to introduce Youssef Seddik who has joined us as the Communications Assistant. He will be in touch with many of you in the months ahead about partnership activities. It is also my bittersweet responsibility to acknowledge Jane Wedlock's contributions to the partnership on the occasion of her retirement from the United Way of Greater Toronto. We have benefited from Jane's expertise in KM and public education, her tremendous knowledge of the non-profit sector in the GTA, and her steadfast commitment to community-based research. It is a pleasure to work with Jane whose humour and charm facilitate even the most difficult conversations. On behalf of everyone, especially the KM Committee, I want to thank Jane and wish her a fantastic retirement full of travel and family events.

have worked hard to administer the partnership from their homes since March. Although the recent approval of Canada's first vaccine promises an end to the pandemic, we continue to work remotely. Please contact the Secretariat through email, bmrcirmu@yorku.ca.

My very best wishes for a restful, safe and happy holiday,

Valerie

Knowledge Mobilization News



List of Policy Preview published

1. [International Students and COVID-19: Experiences, Policies and Options](#) by [Nahid Sultana](#), [Francine Schlosser](#) and [Valerie Preston](#)

New Research Digests during the last months:

1. [Gender and Resilience Among Temporary Migrants in Waterloo Region](#) by [Jenna Hennebry](#) and [Allison Petrozziello](#). Click [here](#) for the French version.
2. [The role of Christian religious groups with Syrian refugees and Haitian asylum seekers](#) by [Frédéric Dejean](#) and Emerson Jean-Baptiste. Click [here](#) for the French version.
3. [Supporting Intelligent Career Pathways For Edu-Immigrants: A Path To Post-Education Resilience](#) by [Francine Schlosser](#), [Gerry Kerr](#), [Nahid Sultana](#) and [Reza Shahbazi](#). Click [here](#) for the French version.
4. [COVID-19, Migration and the Canadian Immigration System](#) by [John Shields](#) and [Zainab Abu Alrob](#). Click [here](#) for the French version.
5. [Stalled Mobility: Income Inequality and Intergenerational Relationships](#), by [Nancy Mandell](#), [Amber Gazso](#), [Guida Man](#) and Larry Lam. Click [here](#) for the French version.
6. [Promoting Migrant Resilience through Collective Action](#) by [Rupaleem Bhuyan](#), [Andrea Bobadilla](#), Alisha Alam and [Tenzin Chime](#). Click [here](#) for the French version.
7. [The reception of refugees and asylum-seekers in Quebec: documenting, contextualizing, and valuing the "Vivons nos quartiers" initiative in Montreal](#), by [Alexandra Charette](#), [Anna Goudet](#) and Catherine Paquette. Click [here](#) for the French version.

Webinar on Infographics in January 2021:

The Knowledge Mobilization Unit at York University, in collaboration with the BRMC-IRMU Team, will be facilitating a session on **Infographics: the visual representation of data and information from research** on

Get to know our research projects and our researchers!



International Students and COVID-19: Experiences, Policies and Options

International students are an integral part of Canadian education institutions and the government's annual immigration targets. In 2019, 642,480 international students at all levels studied in Canada, and most of them desire to start careers and pursue permanent residency in Canada after graduation (Immigration, Refugees and Citizenship Canada, 2020a). The BMRC-IRMU Partnership organized a webinar on International Students and COVID-19: Experiences, Policies and Options on September 30, 2020 and over 110 participants attended in this session. This webinar investigated the impact of the COVID-19 pandemic on international students and the educational institutions where they study. The panelists: Chris Busch, Acting Associate Vice-President, University of Windsor; Larissa Bezo, President and CEO of Canadian Bureau for International Education; Nathaniel Veltkamp, Manager of International Recruitment and Project Development at St. Clair College; and Ankit Tripathi, international student representative for the Canadian Federation of Students, discussed how COVID-19 had affected international students, immediate institutional responses and the pandemic's potential impacts on post-graduate careers and permanent residency pathways. Click [here](#) for the full Policy Preview and the recording of the webinar is available [here](#).

We are pleased to feature [Allison Petrozziello](#), PhD in Global Governance at the Balsillie School of International Affairs, Wilfrid Laurier University.

Allison Petrozziello is a feminist migration researcher and human rights advocate who is pursuing a PhD in Global Governance at the Balsillie School of International Affairs, Wilfrid Laurier University. A specialist in gender, migration, human rights, and development, Ms. Petrozziello has over 15 years of experience in applied research and international development work in Central America and the Caribbean with actors ranging from grassroots



Highlights

The TCRI reveals new data on the situation of refugee claimants working in essential services in Quebec during the COVID-19 pandemic.

La Table de concertation des organismes au service des personnes réfugiées et immigrantes (TCRI) dévoile les données d'un sondage mené auprès de quelque 400 personnes demandant l'asile et ayant travaillé dans les services essentiels au Québec pendant la pandémie de la COVID-19. Ce sondage révèle des conditions de travail et de vie précaires pour ces travailleurs essentiels, notamment un accès difficile aux soins de santé et aux services de garde. À l'aube d'une prévisible seconde vague lors de laquelle ces personnes seront encore au front, les organismes de la TCRI demandent aux gouvernements provincial et fédéral d'accélérer la régularisation du statut de tous les travailleurs essentiels demandeurs d'asile et de favoriser leur accès aux services. Le rapport complet est disponible [ici](#).

The Table de concertation des organismes au service des personnes réfugiées et immigrantes (TCRI) has revealed the results of a survey of some 400 refugee claimants working in essential services in Quebec during the COVID-19 pandemic. These results expose the precarious work and living conditions of these essential workers, in particular their difficulties accessing healthcare and childcare services. A second wave of the pandemic may soon be upon us and would see these workers once again called upon to serve on the front lines. The TCRI is therefore calling upon the provincial and federal governments to expedite the regularization of all refugee claimants who are essential workers, and to ameliorate their access to services. Click [here](#) for more information.

Community Partner

Jane Wedlock , Manager of Public Affairs at United Way Greater Toronto.

Jane has worked in York Region for over 30 years in both the public sector and most extensively within the community/social service sector. Jane's experience includes providing community based knowledge mobilization services such as building relationships and brokering partnerships between community



social determinants of health, housing and economic vulnerability. She has organized and facilitated numerous multi-stakeholder networking events and participated in networks involving service providers, policy makers and academics with a particular focus on engaged scholarship. As a member of the Migration and Resilience in Urban Canada Project team, Jane provides assistance to develop and sustain collaborations among academics, researchers and service providers through knowledge exchange.

Publicizing events and publications through social media, Jane helps maximize the impact of the project by drawing public attention to research findings. We take this opportunity to wish Jane a safe and happy retirement.

Executive Committee

The Executive Committee is pleased to announce that funding has been allocated to [Prof. Rupaleem Bhuyan](#), at University of Toronto and [Prof. Jill Hanley](#) at McGill University for their project on Migrant Resilience in the Context of Transitions in Immigration Status. The team includes Prof. Delphine Nakache, University of Ottawa, [Prof. Jenna Hennebry](#), Wilfrid Laurier University, and [OCASI](#). The funds will support conducting secondary qualitative data analysis of BMRC studies on transitions in immigration status.

Announcements

1. The Editors of Citizenship Studies are pleased to announce the eighth annual special issue competition. Please click [here](#) for more information.
2. Join the Canada Excellence Research Chair in Migration and Integration program for its second annual international conference : Migration and the Future of work: Canadian and Comparative Perspectives in Pandemic Times. Please click [here](#) for more information.
3. The IMRC is pleased to invite you to a free online screening of Safe Haven, an award-winning documentary film by Alison Mountz, Director of the IMRC, and filmmaker Lisa Molomot. Please click [here](#) for more information.

Other Important Information-Autre Information Importante

BMRC-IRMU Online Platforms:

[Website](#)

[Twitter](#)

[Facebook](#)

[YouTube](#)

For more information about this newsletter:

York University
4700 Keele St.
Kaneff Tower, 803
Toronto, ON M3J 1P3
416-736-2100 Ext 20544
bmrcirmu@yorku.ca

💡 Like this issue? [Forward it to a friend](#)    



4700 Keele St, Toronto, ON M3J 1P3
<http://bmrc-irmu.info.yorku.ca> | bmrcirmu@yorku.ca | +1 (416) 736-2100
Copyright © 2016 Building Migration Resilience in Cities.

You are currently signed up to Company's newsletters as: [. To unsubscribe click here.](#)

This email was sent to <<Email Address>>
[why did I get this?](#) [unsubscribe from this list](#) [update subscription preferences](#)
BMRC-IRMU · 4700 Keele St, Toronto, ON · North York, On M3J 1P3 · Canada

