



[Trouble viewing images? View online version](#)

News and Updates. February 26, 2021- issue # 34

 [Visit Website](#)

 +1 (416) 736-2100
Ext 20544

Migration and resilience in urban Canada-Immigration et résilience en milieu urbain



Hi Everyone,

In this snowy winter of endless work from home, the BMRC-IRMU activities continue apace. I am looking forward to the next webinar entitled [Ottawa, do we have a problem? International student numbers, labour markets, and pathways to permanent residence](#) that will examine how the growth in the numbers of international students affects current policies and practices regarding their transitions to permanent residence. I hope you will join me to hear a stellar panel on March 9, 2021 from 1:30-3:00PM. Please have a look at the publications about supports for international students, *Vivons nos quartiers*, and Syrian refugee resettlement in Gatineau that have been posted recently on the [website](#).

The partnership's research program has been enhanced by the decision of the Steering Committee to fund two projects examining the future of the settlement sector and employers and migrant resilience. Working groups are meeting regularly to launch both projects, so watch for updates.

The KM Committee sponsored a well-attended workshop about infographics in January. Please check the KM News below for information about the next workshop in the series and upcoming publications. I can also report that after welcome intervention from UIT at York University, the BMRC-IRMU staff are making steady progress enhancing the French-language part of the website. Stay tuned.

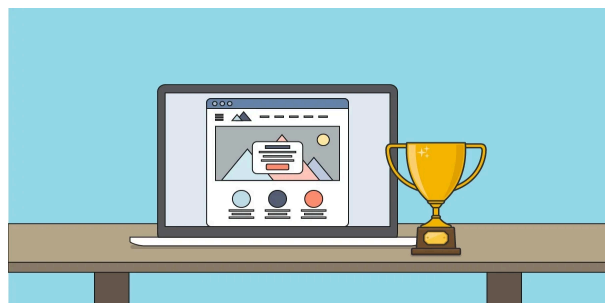
As the end of the fiscal year approaches, some of you will be receiving requests for information from Camila Bonifaz and myself. We appreciate your prompt replies. Even in unprecedented times, the university and our funders require that we report on our activities and finances. The end date for partnership funding is now March 31, 2022, so funding extensions are possible, but they need to be processed before March 31, 2021. For those of you who want a funding extension, it is crucial that we receive your request and an update on your project as soon as possible since working from home delays administrative processes.

The Secretariat continues to work remotely. The best way to reach Shehnaz, Camila, Farah, Youssef and myself is through email, bmrcirmu@yorku.ca.

Best wishes

Valerie

Knowledge Mobilization News



List of Research Report published

1. [VNQ, Study Phase II : Documenting, contextualizing and promoting Vivons nos quartiers initiative](#) by [Anna Goudet](#), [Alexandra Charette](#) and Catherine Paquette . The full report in French is available [here](#)

List of Policy Preview published

1. [How to support international students in Canada – OCASI ED Network](#) by [Nahid Sultana](#), [Francine Schlosser](#) and [Valerie Preston](#)

New Research Digests during the last months:

1. [Two Montreal districts in the eyes of newcomers](#) by [Anna Goudet](#), [Florence Bourdeau](#), [Chedly Belkhodja](#), Catherine Paquette, Mireille Paquet, and Myriam Richard. Click [here](#) for the French version.
2. [Newcomers' perceptions and experiences of their reception](#) by [Anna Goudet](#), [Florence Bourdeau](#), [Chedly Belkhodja](#), Catherine Paquette, Mireille Paquet, and Myriam Richard.. Click [here](#) for the French version.
3. [Refugee sponsorship and family reunification in Canada](#) by [Patti Tamara Lenard](#), Stefanie Morris and Stacey Haugen . Click [here](#) for the French version.

Other Presentations and Interviews:

Prof. John Shields participated in the webinar on [COVID-19 Impacts on Canadian Immigration and the Future of the Canadian Labour Market](#), organized by Skills for Change (January 2021)

Prof. Jenna Hennebry participated in the [Can Immigration Boost Canada's Economy?](#), organized by The Agenda with Steve Paikin (January 2021)

Webinar on CANVA in March 2021:

The Knowledge Mobilization Unit at York University, in collaboration with the BRMC-IRMU Team, will be facilitating a session on **CANVA**- a graphic design platform, used to create social media graphics, presentations, posters, documents and other visual content either *March 23, 2021 from 3 pm to 4:30 pm* or *March 30, 2021 from 1:30 to 3 pm* . Please complete the doodle poll [here](#) to indicate your availability to participate in this session.

[webinar on Ottawa, do we have a problem? international student numbers, labour markets, and](#)
[pathways to permanent residence](#) on March 9, 2021 from 1:30 to 3 pm.

Please click [here](#) to register.

Get to know our research projects and our researchers!



*Étude VNQ, phase II : Documenter, contextualiser et valoriser l'initiative, **Vivons nos quartiers**:*

Le projet **Vivons nos quartiers**, qui a vu le jour dans la foulée de l'arrivée des réfugiés syriens en 2015-2016, puis s'est adapté aux réalités du terrain avec l'arrivée des demandeurs d'asile, notamment à partir de 2017, a été développé et mis en place en partenariat avec la Table de concertation des organismes au service des personnes réfugiées et immigrantes (TCRI) et Centraide du Grand Montréal. Il a pour principal objectif de mettre en commun et de partager les meilleures pratiques d'inclusion à l'échelle des quartiers de Montréal. Ce rapport vise à contextualiser l'initiative Vivons nos quartiers et à l'analyser selon trois perspectives différentes. Il comporte trois sections distinctes et indépendantes. L'accueil et l'intégration des immigrants au statut précaire : rapports entre les acteurs La première section retrace l'historiographie de l'accueil et de l'intégration des personnes au statut précaire et s'appuie sur les propos de nos informateurs et informatrices et sur une recherche documentaire. Elle documente l'évolution des politiques en matière d'accueil et établissement des réfugiés et demandeurs d'asile aux niveaux provincial et fédéral ainsi que les relations entre les acteurs gouvernementaux et non gouvernementaux. Elle met aussi en lumière le rôle prépondérant qu'a occupé le secteur communautaire de l'accueil et intégration au cours des quarante dernières années et la tradition de concertation qu'elle met en œuvre. . Click [here](#) for the research report in French. The executive summary report in English is available [here](#) .

We are pleased to feature [Jana Borrás](#), PhD Candidate in the Department of Sociology, Faculty of Liberal Arts and Professional Studies, at York University.



research project.

include the incorporation of newcomer migrants, the differential inclusion/exclusion of migrant workers and the citizenship-employment trajectories of migrants in Canada. Jana is a research assistant for BMRC-IMRU's Stalled Mobility? Income Inequality and Intergenerational Relationships Among Newcomer South Asian and Chinese Households in York Region

Highlights

How to support international students in Canada? Webinar at OCASI ED Network, November 2020

The COVID 19 pandemic has caused tremendous stress and uncertainty among international students regarding their studies, careers, and pathways to permanent residency in Canada. Many of the current challenges facing international students existed prior to the pandemic, but the pandemic has highlighted these vulnerabilities, as well as the limitations of educational institutions' responses to these challenges. International students have been severely affected by the crisis and, more than ever, require different types of support from the institutions where they study, as well as from settlement agencies, community organizations, and governments at all levels. A recent public forum organized by the Ontario Council of Agencies Serving Immigrants (OCASI) and Building Migrant Resilience in Cities/Immigration et résilience en milieu urbain (BMRC-IRMU) Partnership investigated international students' access to services during the era of COVID. Click [here](#) for more information. The full recording of the event is found [here](#).

Community Partner



Pierre-Constantin Charles, Conseiller en planification et gestionnaire des relations communautaires chez Centraide du Grand Montréal.

Pierre-Constantin Charles possède une formation en service social et est détenteur d'un MBA de l'école des sciences de la gestion de l'UQAM. Il évolue dans l'action communautaire et sociale depuis plus de trente ans à titre de gestionnaire d'organisme auprès des nouveaux arrivants et de consultant en gestion de la diversité et en activités philanthropiques. Les enjeux de développement territorial et humain sont au cœur de ses actions professionnelles. Ses fonctions actuelles de conseiller en planification et responsable des relations avec les milieux à Centraide du grand Montréal lui ont permis de développer une expertise particulière en analyse sociale et territoriale, en évaluation de projet et en concertation.

Announcements

BMRC-IRMU is pleased to announce that the following members have been awarded the [Partnership Engage Grants COVID-19 Special Initiative 2020-2021](#) by SSHRC.

1. Prof.utama Ghosh, Ryerson University for her reasearch on **COVID-19: Challenges and Resilience of International Students and Local Institutions in Canada's Medium-Sized Cities: A Case Study of Greater Sudbury, in Northern Ontario**. Please click [here](#) for more information.
2. Prof. Jenna Hennebry, Wilfrid Laurier University for her reasearch on **COVID-19: Pandemic Survey of Migrant Agricultural Workers in Ontario**. Please click [here](#) for more information.
3. Prof. Christina Gabriel, Carleton University and Prof. Luisa Veronis, University of Ottawa, for their reasearch on **COVID-19: Working Through the Pandemic - The Experiences of Immigrant Women** . Please click [here](#) for more information.
4. Prof. Anyck Dauphin, Université de Quebec en Outaouais pour sa recherche sur **Réinstallation et accompagnement de familles immigrantes en milieu agricole** . Please click [here](#) for more information.

Other Important Information-Autre Information Importante

BMRC-IRMU Online Platforms:

[Website](#)

[Twitter](#)

[Facebook](#)

[YouTube](#)

For more information about this newsletter:

York University
4700 Keele St.
Kaneff Tower, 803
Toronto, ON M3J 1P3
416-736-2100 Ext 20544
bmrcirmu@yorku.ca

💡 Like this issue? [Forward it to a friend](#)



[Subscribe](#)

[Past Issues](#)

[Translate](#) ▼



4700 Keele St, Toronto, ON M3J 1P3

<http://bmrc-irmu.info.yorku.ca> | bmrcirmu@yorku.ca | +1 (416) 736-2100

Copyright © 2016 Building Migration Resilience in Cities.

You are currently signed up to Company's newsletters as: [. To unsubscribe click here.](#)

This email was sent to <<Email Address>>

[why did I get this?](#) [unsubscribe from this list](#) [update subscription preferences](#)

BMRC-IRMU · 4700 Keele St, Toronto, ON · North York, On M3J 1P3 · Canada

