



[Trouble viewing images? View online version](#)

News and Updates. April 23, 2021- issue # 35

 [Visit Website](#)

 +1 (416) 736-2100  
Ext 20544

## Migration and resilience in urban Canada-Immigration et résilience en milieu urbain



Hi Everyone,

As spring finally arrives, the BMRC-IRMU partnership continues its many activities. Five presentations examined the disparity between the number of international students admitted to study annually in Canada and the relatively small number who succeed in obtaining permanent residence at our latest webinar. Watch for the policy preview and recordings for [Ottawa, do we have a problem? International student numbers, labour markets, and pathways to permanent residency](#). Please have a look at the recent report about immigration and settlement policy in Quebec [Les structures de gouvernance de l'immigration et de l'intégration des immigrants au Québec](#), and the recent publications about the resettlement of Syrian refugees in Gatineau, sanctuary cities, and the importance of place to successful immigrants. A paper about edu-immigrants by Francine Schlosser, Duncam Lam, and Gerry Kerr in International Migration also deserves your attention. Currently, we are planning a series of webinars in May and June reporting much of the partnership's research. Please stay tuned.

The future of the settlement sector and employers and migrant resilience projects are underway. The settlement sector working group is planning a survey with our Ontario and Quebec partners to learn managers' and settlement workers' views about the sector post-pandemic. The industries where recent immigrants are finding work are also under investigation as the working group plans a study of human resource practices in small to medium enterprises in the same sectors. Watch for updates.

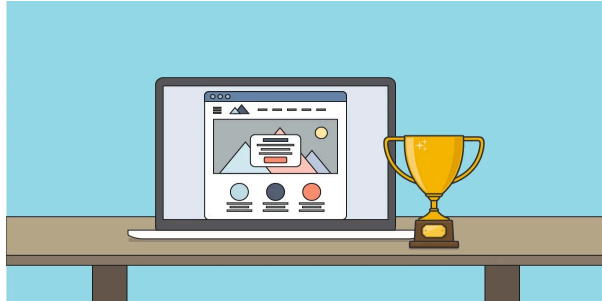
The KM Committee sponsored a second workshop about Canva, a well-known program for preparing graphics. Please check the KM News below to learn where you can find the presentations on the partnership's website. The French-language part of the website is almost up to date. Please check it out.

As the end of the fiscal year approaches, some of you have received requests for information from Camila Bonifaz. We appreciate your prompt replies. The Secretariat continues to work remotely. The best way to reach Shehnaz, Camila, Farah, Youssef and myself is through email, [bmrcirmu@yorku.ca](mailto:bmrcirmu@yorku.ca).

As we struggle through a third wave, I hope each of you stays safe and healthy.

Valerie

## Knowledge Mobilization News



### List of Research Report published

1. [Structures for the governance of immigration and immigrant integration in Quebec](#) by [Alexandra Charette](#). The full report in French is available [here](#)

### New Research Digests during the last months:

1. [Assessment of the resettlement of Syrian refugees in Gatineau](#) by [Anyck Dauphin](#) and [Luisa Veronis](#). Click [here](#) for the French version.
2. [Discovering Destination Cities: The Role of City Objects in generating Migrants' Resilience](#) by [Jelena Zikic](#) and [Viktoriya Voloshyna](#). Click [here](#) for the French version.
3. [Sanctuary cities in Canada: practices, needs and policies](#) by [Mireille Paquet](#), [John Shields](#), [Meghan Joy](#), [Idil Atak](#) and [Graham Hudson](#). Click [here](#) for the French version.

### Other Presentations :

1. [CANVA Presentation](#) : We take this opportunity to thank Michael Johnny and Krista Jensen, [Knowledge Mobilization Unit at York University](#) for this presentation.
2. [Valerie Preston](#), [Margaret Walton Roberts](#), [Sutama Ghosh](#), [Francine Schlosser](#) and [Luisa Veronis](#) presented on [Building Resilience Systems To Support International Students To Canada](#), organized by Pathways to Prosperity: Canada Virtual Workshop Series (March 2021).

Get to know our research projects and our researchers!



**Many Versions of Work in Ottawa-Gatineau's Labour Market: A profile of immigrant workers and their economic status in a post-industrial city** by [Brian Ray](#)

This report profiles the immigrant population residing in the Ottawa-Gatineau metropolitan area, with an emphasis on the labour market involvement and employment earnings of women and men who have settled recently in Canada. Information from the 2016 Canadian census highlights the complexity of the immigrant population and its economic activities. The Ottawa-Gatineau metropolitan area is unusual in several ways – the division of the region between two provinces; an almost complete absence of manufacturing; high median employment earnings; and the federal government as the region's largest industry. This report is a point-in-time snapshot of immigrants' socio-economic and employment status in an urban economy dominated by services with unique employment challenges created by the federal government.

Click [here](#) for the research report in english. Le résumé en français est disponible [ici](#).



We are pleased to feature [Gülay Kilicaslan](#), PhD Candidate in the Department of Sociology at York University.

Gülay Kilicaslan is also a doctoral fellow at the Global Digital Citizenship Lab. She has conducted many projects and published many reports and books in collaboration with migrant and refugee justice networks and grassroots organizations in the Middle East and Canada. Her writings on Kurdish forced migrants and the Kurdish political movement have appeared in scholarly edited books and journals. Her latest work on the interaction between Syrian Kurdish forced migrants and internally displaced Kurds in Istanbul was published in the *New Perspectives on Turkey* journal.

## Highlights

**Villes sanctuaires au Canada: pratiques, besoins et politiques**

Le projet vise à mieux comprendre les pratiques officielles, les approches informelles ainsi que les besoins des acteurs de terrain associés aux déclarations de « ville sanctuaire » et aux politiques « d'accès sans peur » au Canada. Le projet explore les approches mises en place par plusieurs villes canadiennes pour répondre aux besoins des résidents sans statut d'immigration ou vivant avec un statut précaire. Il documente aussi les façons dont les organisations offrant des services aux immigrants évaluent les efforts des villes et les besoins en matière de services à ces populations.

Cliquez [ici](#) pour le recueil de recherche complet. The Research Digest can be found [here](#).

## Community Partner



**Tara Bedard**, Executive Director, Waterloo Region Immigration Partnership.

Tara Bedard works with The Regional Municipality of Waterloo as Executive Director of the Waterloo Region Immigration Partnership. There, she leads regional learning, planning and action on immigration among a collaboration of residents and community service, business, post-secondary, and municipal partner organizations. Previously, she was an executive leader responsible for research, policy, and communication programs with a European public interest law organization, working closely with United Nations, European Union and Council of Europe institutions and national governments. She has extensive experience in social research, policy analysis and development, government relations, community development and engagement. Tara is also the Metropolis Service Provider Award Recipient 2021, announced at the National Metropolis Conference in March 2021.

## Announcements

1. **[Departures, Arrivals and Encounters": Feminist Approaches to Migration and Mobility Justice](#)** organised by [Remote Summer Institute](#) and hosted by [Dr. Gada Mahrouse](#), [Simone De Beauvoir Institute](#), [Concordia University](#) on May 10 to 19, 2021. Please click [here](#) for more information.
2. **Call for Proposals: T-AP Recovery, Renewal and Resilience in a Post-Pandemic World (RRR)**. The [Social Sciences and Humanities Research Council of Canada](#) (SSHRC) has announced that it is participating in the third joint research call on Recovery, Renewal and Resilience in a Post-Pandemic World (RRR) launched by the Trans-Atlantic Platform (T-AP). SSHRC is collaborating with key humanities and social science funders in Europe and the Americas to support international research projects that can contribute to increasing our understanding of societal transformations and the role of social innovation. Please click [here](#) for more information.

l'immigration, avec le soutien financier du Ministère de l'immigration, de la francisation et de l'intégration du Gouvernement du Québec. Ce forum se tiendra le 28 au 30 avril 2021. Please click [here](#) for more information in English.

## Other Important Information-Autre Information Importante

### BMRC-IRMU Online Platforms:

[Website](#)

[Twitter](#)

[Facebook](#)

[YouTube](#)

### For more information about this newsletter:

York University  
4700 Keele St.  
Kaneff Tower, 803  
Toronto, ON M3J 1P3  
416-736-2100 Ext 20544  
[bmrcirmu@yorku.ca](mailto:bmrcirmu@yorku.ca)

💡 Like this issue? [Forward it to a friend](#)



4700 Keele St, Toronto, ON M3J 1P3

<http://bmrc-irmu.info.yorku.ca> | [bmrcirmu@yorku.ca](mailto:bmrcirmu@yorku.ca) | +1 (416) 736-2100

Copyright © 2016 Building Migration Resilience in Cities.

You are currently signed up to Company's newsletters as: [. To unsubscribe click here.](#)

**Subscribe**

**Past Issues**

This email was sent to <<Email Address>>

**Translate ▼**

[why did I get this?](#) [unsubscribe from this list](#) [update subscription preferences](#)  
BMRC-IRMU · 4700 Keele St, Toronto, ON · North York, On M3J 1P3 · Canada

