




[Trouble viewing images? View online version](#)

News and Updates. June 21, 2021- issue # 36

 [Visit Website](#)

 +1 (416) 736-2100
Ext 20544

Migration and resilience in urban Canada-Immigration et résilience en milieu urbain



Hi Everyone,

The current pace of partnership activities indicates everyone is adjusting successfully to pandemic restrictions. The future of the settlement sector and the employers and migrant resilience projects are underway dealing with York University approvals. The International Student Working Group is taking stock of recent policy changes and their impacts on students' pathways to permanency. Six webinars have highlighted the partnership's research on topics ranging from Building migrant resilience in cities and neighbourhoods to Portraits of resilience: international students. Check out the [videos and slides](#) on the partnership website. We will wrap up the series with a webinar, **Resilience and Refuge**, 12:15PM, Wednesday, June 23. Finally, kudos to [Guida Man](#) who was awarded a [SSHRC Insight grant examining eldercare issues for Chinese immigrant families](#).

Check the KM News below for an announcement about a recent research digest. The study details are available in the recent [article](#) published by [Rupaleem Bhuyan](#) and [Vivian Leung](#). With the welcome addition of [Stephan Reichhold](#) and [Reza Shahbazi](#), the KM Committee is planning fall webinars and considering how to resume in-person events. Although it will always be a work in progress, the [French-language version of the website](#) is now available thanks to our team's hard work. Send KM ideas, comments, and compliments to bmrcirmu@yorku.ca.

The KM Committee sponsored a second workshop about [Canva](#), a well-known program for preparing graphics. Please check the KM News below to learn where you can find the presentations on the partnership's website. [The French-language part of the website](#) is almost up to date. Please check it out.

It is a pleasure to welcome Dr. Jayesh D'Souza as a Researcher for the future of the settlement sector project, We will benefit from his PhD in Public Administration from Florida International University, his experience working in the public, consulting, and academic sectors, and an extensive publication record. It is bittersweet news that [Dr. Alexandra Charette](#) has left her position as a Post-Doctoral Fellow for a full-time job in Montreal. Her contributions to the partnership are greatly appreciated and her expertise and energy will be missed. I know the entire partnership wishes her the very best in all future endeavours.

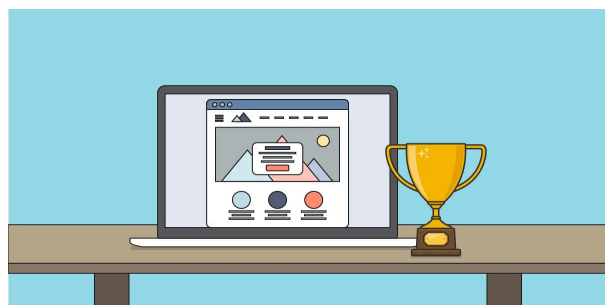
continues to work remotely so the best way to reach our team remains email, bmrcimu@yorku.ca. A staggered vacation schedule will begin on June 28, 2021 so we appreciate your patience with slow replies.

Enjoy a wonderful summer.

Best wishes,

Valerie

Knowledge Mobilization News



List of Research Report published

1. [Many Versions of Work in Ottawa Gatineau's Labour Market: A profile of immigrant workers and their economic status in a post-industrial city](#) by [Brian Ray](#). The interview with Brian Ray is posted [here](#). Le rapport exécutif est disponible [ici](#).

New Research Digest during the last month:

1. [Is Migrant Resilience a Civic Responsibility? A framing analysis of "resilience" in City of Toronto and Ontario integration policies](#) by [Rupaleem Bhuyan](#), [Vivian Leung](#), [Luisa Veronis](#) and Virginie Mesana. The interviews with Rupaleem Bhuyan and Vivian Leung are posted [here](#). Cliquer [ici](#) pour le recueil de recherche.

Webinars during the last months:

1. [Migrant Resilience in Canadian Cities: People, Institutions and Policies- Gender, Civic Engagement, and Migrant Resilience](#) on May 12, 2021.
Presentations on [A Gender-Based Approach to Settlement and Integration Support](#) by [Jenna Hennebry](#) and [Allison Petrozziello](#), [Civic Engagement as a Response to Economic Exclusion Among Immigrant Women in Montreal](#) by [Alexandra Charette](#) and [Transformative Resilience through Migrant Collective Action](#) by [Rupaleem Bhuyan](#) and [Vivian Leung](#).
2. [Migrant Resilience in Canadian Cities: People, Institutions and Policies - Portraits of Resilience: International Students](#) on May 19, 2021.
Presentations on [Montréal, Welcoming City for International Students?](#) by [Chedly Belkhdja](#) and Amel Gherbi, and "Hearing the untold": [Methodological Challenges of a Social Resilience Approach to Studying International Students](#) by [Sohail Shahidnia](#). The full recording of the webinar is available [here](#).

Presentations on [Is Settlement a “Family affair”? Families as Sources of Support and Stress during Newcomer Settlement](#) by [Janice Phonepraseuth](#) and [Jana Borrás](#), [Family Reunification: A Social Resilience Approach to Integration](#) by [Stéphanie Morris](#) and [Factors of Economic Resilience: Immigrant Families Capacity to Weather A Financial Storm](#) by [Nahid Sultana](#). The full recording of the webinar is available [here](#).

4. [Migrant Resilience in Canadian Cities: People, Institutions and Policies - Building migrant resilience in cities and neighbourhoods](#) on June 2, 2021.

Presentations on [How do neighborhood spaces influence the resilience of newcomer families? A comparative study of three neighborhoods in Ottawa-Gatineau](#) by [Luisa Veronis](#) and [Information Access and Collective Resilience for Newcomer Communities](#) by [Michaela Hynie](#) and Vera Dodic.

5. [Migrant Resilience in Canadian Cities: People, Institutions and Policies - Resilience and earning a living](#) on June 9, 2021.

Presentations on [Skilled migrants, City Integration and Migrant Resilience](#) by Ms. Viktoriya Voloshyna and [Jelena Zikic](#) and [Immigration, Gender, Essential Work, and Resilience](#) by [Valerie Preston](#) and [Marshia Akbar](#).

Other Presentations :

1. [International Students' Perceptions and Experiences in a Bilingual University: A Geographical Approach to Linguistic Capital](#) by [Luisa Veronis](#), [Rachel Walker](#) and Xiaohao Wu at [Bilingualism and Beyond: Advancing the Thinking on Pedagogies, Policies and Practices](#), University of Ottawa on April 30, 2021.
2. [International Students, Resilience and Systems of Support: Who is Responsible?](#) by Kanchan Ladhar, [Margaret Walton-Roberts](#) and [Jenna Henneby](#) at [The Growing International Education and Immigration Nexus: Implications for Higher Education session, Canadian Society for the Study of Higher Education, FHSS Congress](#) on June 1, 2021.
3. [English- and French-speaking international graduate students' experiences with on- and offcampus employment in a bilingual context](#) by Xiaohao Wu, [Luisa Veronis](#) and [Rachel Walker](#) at [CAG 2021: 71st Annual Meeting & Conference Embracing connectivity: Coming together and moving forward](#) on June 7-11, 2021.

Partnership Engage Grants by SSHRC :

1. Interview with [Christina Gabriel](#), [Luisa Veronis](#) and Ottawa Local Immigration Partnership on [COVID-19 Working Through the Pandemic - The Experience of Immigrant Women](#), on May 16, 2021.
2. Interview with [Sutama Ghosh](#) and [Sohail Sahidnia](#) on [COVID-19: Challenges and Resilience of International Students and Local Institutions in Canada's Medium-Sized Cities: A Case Study of Greater Sudbury, in Northern Ontario](#) on May 20, 2021.

Get to know our research projects and our researchers!



Ottawa, is there a problem? International student numbers, job experiences and pathways to permanent residency by [Nahid Sultana](#), [Francine Schlosser](#), and [Valerie Preston](#).

The COVID 19 pandemic provides opportunities for policymakers, educational institutions, settlement agencies, and immigrant and ethnic communities to recognize the unique circumstances and vulnerabilities of international students, in particular, those who desire to transition to permanent residence in Canada. International students have become an integral part of Canada's postsecondary landscape, an important supply of workers, and a source of substantial revenues that boost the Canadian economy. However, the growing number of international students that wish to become Canadian citizens present urgent challenges concerning the admission of skilled workers and the provision of settlement services. Click [here](#) for the full policy preview.



We are pleased to feature [Vivian Leung](#), PhD Candidate & Research Coordinator at Factor-Inwentash Faculty of Social Work, University of Toronto.

Vivian holds a Master of Arts in Social Policy from the Chinese University of Hong Kong. She is interested in immigrant and immigration issues and family relationships. Her thesis project examines parental cultural socialization by Chinese parents in Canada and the United States, and the influence of racism and parents' social network in the process.

She has been involved in multiple research projects related to settlement experiences, immigration policy analysis, and practice-based research. She is also engaged in the migrant community in Toronto through her work with several community-based organizations.

Highlights

Is Migrant Resilience a Civic Responsibility? A framing analysis of "resilience" in City of Toronto and Ontario integration policies

against racialized immigrants and other 'equity-seeking groups.' Toronto for All promotes 'civic resiliency' among all Toronto residents who are faced with increasing population diversity and growing inequities. Considering that immigration is cited as a social condition that requires "resilient cities", we examined how municipal and provincial governments mobilize the concept of resilience to promote immigrant well-being and prosperity.

The Research Digest can be found [here](#). Cliquez [ici](#) pour le recueil de recherche.

Community Partner



Lisa Alfieri Sladen - , Manager Human Services Strategy and Partnerships, Regional Municipality of York.

Since 2016, [Lisa Alfieri Sladen](#) has led The Regional Municipality of York's development of collaborative strategies and partnerships aimed at delivering integrated human services programs and services to the Region's 1.2 million residents. She oversees the secretariat support provided to various Boards and Councils focused in promoting positive change, including York Region's Human Services Planning Board, and Community Partnership Council under the Local immigration Partnership.

In her role Lisa oversees key research studies related to workforce development strategies, community benefits, and the economic and social integration of newcomers in York Region.

Announcement

1. [Call for Proposals: T-AP Recovery, Renewal and Resilience in a Post-Pandemic World \(RRR\)](#): The [Social Sciences and Humanities Research Council of Canada](#) (SSHRC) has announced that it is participating in the third joint research call on Recovery, Renewal and Resilience in a Post-Pandemic World (RRR) launched by the Trans-Atlantic Platform (T-AP). SSHRC is collaborating with key humanities and social science funders in Europe and the Americas to support international research projects that can contribute to increasing our understanding of societal transformations and the role of social innovation.

BMRC-IRMU Online Platforms:[Website](#)[Twitter](#)[Facebook](#)[YouTube](#)**For more information about this newsletter:**

York University
4700 Keele St.
Kaneff Tower, 803
Toronto, ON M3J 1P3
416-736-2100 Ext 20544
bmcirmu@yorku.ca

💡 Like this issue? [Forward it to a friend](#)



4700 Keele St, Toronto, ON M3J 1P3

<http://bmrc-irmu.info.yorku.ca> | bmcirmu@yorku.ca | +1 (416) 736-2100

Copyright © 2016 Building Migration Resilience in Cities.

You are currently signed up to Company's newsletters as: [To unsubscribe click here.](#)

This email was sent to <<Email Address>>

[why did I get this?](#) [unsubscribe from this list](#) [update subscription preferences](#)

BMRC-IRMU · 4700 Keele St, Toronto, ON · North York, On M3J 1P3 · Canada

