




[Trouble viewing images? View online version](#)

News and Updates. October 25, 2021- issue # 38

 [Visit Website](#)

 +1 (416) 736-2100
Ext 20544

Migration and resilience in urban Canada-Immigration et résilience en milieu urbain



Hi Everyone,

Partnership activities continue. There was an exciting webinar reporting about neighbourhoods and migrant integration on Oct. 13, 2021. I hope many of you will enjoy the [second French language webinar](#) on Oct. 27, 2021 about the resilience and the services that assist refugees and asylums seekers. You will find the slides and video [here](#). To prevent a conflict with the first National Day of Truth and Reconciliation, the webinar entitled [Hiring, Discrimination and Newcomer Resilience](#) is now scheduled for 12:15PM on Wednesday, Nov. 10. Please join me to hear new information about newcomers' experiences in the job market and the challenges of studying discrimination by registering [here](#). Plans are underway for a partnership meeting. Watch for information on the website and in the next newsletter. Check the KM News below for news about a fascinating Research Digest examining the experiences of international students during the pandemic.

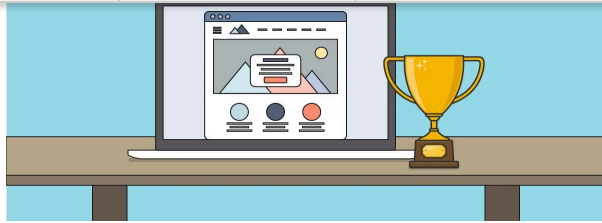
At York, the campus remains open with vaccination mandates and mask requirements in effect. Although people are starting to use their offices for a day or two each week, the best way to reach Shehnaz, Camila, Farah, and myself remains email bmcirmu@yorku.ca.

Best wishes,

Valerie

Knowledge Mobilization News

List of Research Digest published



Ontario by [Sutama Ghosh](#) and [Sohail Shahidnia](#) . The community report is available [here](#) and interviews with Rupaleem and Chime are posted [here](#). Le recueil de recherche est disponible [ici](#).

Webinaire pendant le mois d'octobre 2021:

1. Webinaire sur [La résilience des migrants dans les villes canadiennes: Personnes, Institutions et Politiques: Les quartiers accueillants et la résilience](#), le 13 octobre 2021 par [Annick Germain](#), Institut national de la recherche scientifique, [Chedly Belkhodja](#), Université Concordia, [Alexandra Charette](#), Université Concordia, [Mireille Paquet](#), Université Concordia et [Luisa Veronis](#), Université d'Ottawa. Toutes les présentations et les enregistrements sont disponibles [ici](#).

Other Publications and Presentations/Autres publications et présentations:

1. [Règlementation des consultants en immigration : «Le Canada devrait aussi bien examiner ses pratiques»](#) par [Luisa Veronis](#), Francopresse, 2021.
2. [International Students' Perceptions and Experiences in a Bilingual University: A Geographical Approach to Linguistic Capital](#), by [Luisa Veronis](#) and [Rachel Walker](#), CCERBAL 2021, Symposium on Mobility and Language, April, 30, 2021 .
3. [Settlement Services and Newcomer Wellbeing: Setting the Context](#), by [John Shields](#), Newcomer Wellbeing Symposium, WoodGreen Community Services, October 14, 2021 .

Get to know our research projects and our researchers!



Moving into a decent and affordable dwelling, in a welcoming and safe neighbourhood, is an essential first step in the settlement of newcomers in this country. More than just a roof, the first permanent dwelling permits the organization of daily life and the access to services that support integration. Often this first dwelling meets basic requirements but no more, because of the migratory context and the very limited financial resources or knowledge of the market among immigrant newcomers, who, in the medium term, aspire to improve their residential quality of life. In our housing system, this second step usually involves going from being a tenant to a homeowner, a transition with both symbolic and material importance as a gauge of successful integration into North American society. Click [here](#) for the full policy preview.



We are pleased to feature [Sohail Shahidnia](#), Ph.D. Candidate in Policy Studies at X University.

He is currently working as a Co-Principal Investigator with Professor Sutama Ghosh on a SSHRC funded project, titled, "COVID-19 challenges and resilience of international students and local institutions in the city of Greater Sudbury". .

Highlights

COVID-19: Challenges and Resilience of International Students: A Case Study of Greater Sudbury in Northern Ontario

The ongoing COVID-19 pandemic is causing unique vulnerabilities among international students in many Canadian cities. They face barriers in procuring the necessities of life, such as housing and employment, and feeling socially isolated. Those providing support to international students, i.e., educational institutions, and community organizations, are also facing unique obstacles. In addition to documenting the struggles of international students and institutions during COVID-19 we investigate how they manage and overcome those struggles. This research digest can be found [here](#). Le recueil de recherche est disponible [ici](#)

Community Partner

Isabel Cascante , Director of research, public policy and evaluation with United Way Greater Toronto.



sector. At United Way Greater Toronto, United Way Greater Toronto, Isabel is responsible for developing and implementing the organization's research and evaluation strategies, based on a strong evidence base, a commitment to addressing systemic discrimination, and a solid foundation of partnerships and relationships.

Announcement

Upcoming Webinars/ Prochains webinaires :

1. Webinaire sur [La résilience des migrants dans les villes canadiennes: Personnes, Institutions et Politiques: Le déplacement et les réinstallations des réfugiés et des demandeurs d'asile : les services de soutien et la résilience du secteur](#), par [Anyck Dauphin](#), Université du Québec en Outaouais, [Frédéric Dejean](#), Université du Québec à Montréal, [Mireille Paquet](#), Université Concordia et [Luisa Veronis](#), Université d'Ottawa, prévu pour le 27 octobre 2021 de 12h15 to 13h30. Pour s'enregistrer, veuillez cliquer [ici](#).
2. Webinar on [Hiring, Discrimination and Newcomer Resilience](#), by [Antoine Bilodeau](#), Concordia University, [Debbie Douglas](#), OCASI, [Jenna Hennebry](#), Wilfrid Laurier University, [Jean-Philippe Gauvin](#) and Sharon Broughton, scheduled for November 10, 2021 from 12:15 to 1:30. Please register [here](#).

Steering Committee

The Steering Committee met on October 19, 2021 and drafted a revised policy about Open Access fees that will be circulated for approval. The information from a survey asking members of the partnership about the preferred timing, format, and location of a partnership meeting was also discussed. The options preferred by the most members will be circulated to the Steering Committee for a decision about the timing and format of the partnership meeting.

Other Important Information-Autre Information Importante

BMRC-IRMU Online Platforms:

[Website](#)

[YouTube](#)

For more information about this newsletter:

York University
4700 Keele St.
Kaneff Tower, 803
Toronto, ON M3J 1P3
416-736-2100 Ext 20544
bmcirmu@yorku.ca

💡 Like this issue? [Forward it to a friend](#)



4700 Keele St, Toronto, ON M3J 1P3
<http://bmc-irmu.info.yorku.ca> | bmcirmu@yorku.ca | +1 (416) 736-2100
Copyright © 2016 Building Migration Resilience in Cities.

You are currently signed up to Company's newsletters as: [. To unsubscribe click here.](#)

This email was sent to <<Email Address>>

[why did I get this?](#) [unsubscribe from this list](#) [update subscription preferences](#)
BMRC-IRMU · 4700 Keele St, Toronto, ON · North York, On M3J 1P3 · Canada

