



[Trouble viewing images? View online version](#)

News and Updates. February 23, 2022- issue # 41

 [Visit Website](#)

 +1 (416) 736-2100
Ext 20544

Migration and resilience in urban Canada-Immigration et résilience en milieu urbain



Hi Everyone,

The partnership has been busy since the new year. Fascinating recordings and presentations from the Feb. 2 webinar on migrant resilience during the pandemic are now available. Check for videos and presentations from the bilingual symposium about neighbourhood inequality and COVID that we organized with INRS. With tremendous help from OCASI, the data from a successful survey of Ontario immigrant-serving agencies are now being analysed. Watch for announcements about the findings. Please join me on Wed. Feb. 23 at 12:15 when John Shields, Marshia Akbar, Zainab Abu Alrob and I will discuss the [impacts of COVID on the resilience of migrants and the institutions that support them](#). I look forward to seeing you there.

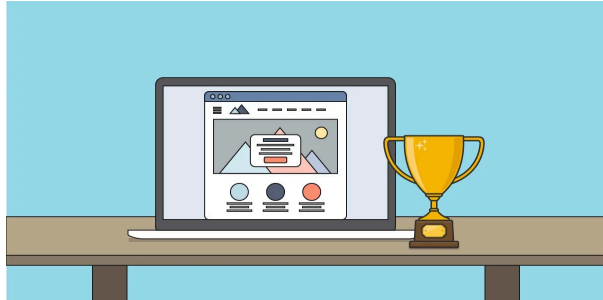
Check out the recent, open access publications by Margaret Walton-Roberts, John Shields, Zainab Abu Alrob and Marshia Akbar among others. An in-person partnership meeting is being planned as an opportunity for collaborators and co-investigators to reconnect.

The postdoctoral fellowships that are key to the success of the partnership are designed as springboards into the labour market. I am pleased to announce that Dr. Nahid Sultana who has been a Postdoctoral Fellow with the Windsor City Network is moving to the non-profit sector as manager of a large evaluation project. Nahid has made invaluable contributions to research about entrepreneurship, immigrant resilience, and international students' settlement issues, as well as the edited volume that is in its final stages. I am very grateful for her contributions. I am sure everyone joins me in wishing Nahid the very best at her new job

York University is reopening slowly. Most people are returning for only part of the week, so the best way to reach me and the Secretariat is through email, bmrcirmu@yorku.ca. Staff will be taking time off during 'March Break.' I appreciate everyone's patience with slow responses.

Best wishes,

Knowledge Mobilization News



Update from the Working Groups:

1. The Resiliency of the settlement sector is chaired by [John Shields](#) and has been meeting from October 2020. An update of the work of this working group is available [here](#).
2. The Employers and Migrant Resilience Working Group are co-led by [Brian Ray](#) and [Jelena Zikic](#). Please click [here](#) for an update of the working group.
3. The International Working Group Working Group are co-led by [Margaret Walton-Roberts](#), [Sutama Ghosh](#) and [Luisa Veronis](#). Please click [here](#) for an update.

Webinar during the month of February 2022:

1. Webinar on [Newcomer Resilience and COVID-19](#), on February 2, 2022 by [Christina Gabriel](#), Carleton University, [Muna Osman](#), Ottawa Local Immigration Partnership (OLIP), [Sutama Ghosh](#), Ryerson University, [Sohail Shahidnia](#), Ryerson University, and [Luisa Veronis](#), University of Ottawa. The recording and presentations are available [here](#).
2. Symposium sur [Les inégalités, les quartiers, la pandémie : réflexions et perspectives](#), 4 février 2022 en collaboration avec l'Institut national de la recherche scientifique (INRS). Le panel a inclu les membres suivants [Xavier St-Denis](#), INRS, [Xavier Leloup](#), INRS, [Damaris Rose](#), INRS and SHERPA, [Sutama Ghosh](#), Ryerson University, [Sohail Shahidnia](#), Ryerson University, Saad El Hakmi, Ryerson University, Chloé Reiser, Université du Nouveau-Brunswick – Saint-John, [Jill Hanley](#), McGill University and SHERPA, Nick Revington, INRS), Celia Benhocine, INRS et Université McGill, Christine Nguyen, INRS et Université de Montréal, Andrée-Anne Lefebvre, Unité de travail pour l'implantation de logement étudiant-UTILE, Josefina Ades, Institut national de santé publique du Québec-INSPQ and Maud Emmanuelle Labesse, Institut national de santé publique du Québec-INSPQ, [Annick Germain](#), INRS, Islem Bendjaballah, INRS, [Luisa Veronis](#), Université d'Ottawa, Simona Bignami, Université de Montréal, Jack Jedwab, Association d'études canadiennes, Josephine Etowa, Université d'Ottawa et [Muna Osman](#), Partenariat local pour l'immigration d'Ottawa (PLIO). Les enregistrements des présentations sont disponibles [ici](#). Recordings of the presentations are available [here](#).

Other Publications :

1. [Borders, Boundaries, and the Impact of COVID-19 on Immigration to Canada](#) by [Margaret Walton Roberts](#), Wilfrid Laurier University, Leah K. Hamilton, Mount Royal University, and Victoria M. Esses, Western University, Studies in Social Justice, Volume 16, Issue 1, 1-8, 2022 .

[Impacts on Refugees, Asylum Seekers and Migrant Workers](#) by [John Shields](#), and [Zainab Abu Alrob](#), Ryerson University, *Studies in Social Justice*, Volume 16, Issue 1, 1-8, 2022 .

3. [Addressing the Senior Digital Divide: Evaluating the Technology, Access and Support for Seniors \(TASS\) Project](#) by Noor Din, Human Endeavour , Lois Kamenitz, York University, [Larry Lam](#), York University, [Nancy Mandell](#), York University and Ben Zhang Studies, York University.

Get to know our research projects and our researchers!



Borders, Boundaries, and the Impact of COVID-19 on Immigration to Canada

by [Margaret Walton Roberts](#), professor in the Geography and Environmental studies department at Wilfrid Laurier University, and affiliated to the Balsillie School of International Affairs, Waterloo Ontario. Her research interests are in gender and migration, transnational networks in the Indian diaspora, and immigrant settlement in Canada.

Although Canada has long been regarded as a global leader in immigration policies and practices (Esipova et al., 2020), the COVID-19 pandemic revealed and exacerbated existing challenges and vulnerabilities in Canada's immigration system (Esses et al., 2021). Border closures restricted who was able to travel, favoring temporary foreign workers who were deemed essential, while also creating lost cohorts of international students (Brunner, this issue) and weakening refugee rights (Abu Alrob & Shields, this issue). Considering employment specifically, the COVID-19 pandemic created and amplified disparities between workers who are required to physically attend work versus those who can work remotely, and it highlighted the issue of who has access to safe working conditions, paid sick leave, alternative childcare options, and other work-related resources and benefits (Dobusch & Kreissl, 2020). For the full article, please click [here](#).



We are pleased to feature [Huan Wang](#), h.D. candidate at Henan Agricultural University in China.

She currently is a Visiting Student Researcher in the Department of Geography, Environment and Geomatics at the University of Ottawa under the supervision of Dr. Luisa Veronis. Their team is conducting a study on skilled newcomers' experiences in the Ottawa-Gatineau labour market with a focus on how they use social media to build their professional networks in the context of the pandemic. She is also interested in how China's migration of rural surplus labour will influence agricultural production and the economy. .

Highlights

A COVID-19 State of Exception and the Bordering of Canada's Immigration System: Assessing the Uneven Impacts on Refugees, Asylum Seekers and Migrant Workers, by *Zainab Abu Alrob* and *John Shields*, Ryerson University.

Responses to COVID-19 have been characterized by rapid border closures that have transformed the pandemic from a crisis of health to a crisis of mobility. While Canada was quick to implement border restrictions for non-citizens like refugees and asylum seekers, exemptions were made for some migrant groups like temporary workers. The pandemic marked a departure from who is considered worthy of admission to Canada. In fact, the border through restricted and securitized measures has filtered desirable versus non-desirable migrants, creating a hierarchy among migrants within Canada's immigration system by categorizing groups into those deserving versus non-deserving of admission.

The full report can be found [here](#).

Partenaire Communautaire

Saint-Phard Desir , Directeur général de Conseil Economique Et Social D'Ottawa-Carleton (CESOC).

[Saint-Phard Desir](#) a été l'auteur du guide « Se trouver un emploi en Ontario, guide pratique pour les nouveaux arrivants francophones » qui vise à aider les immigrants francophones à trouver du travail dans leurs champs de compétence. Puis, il quitte le Canada pour aller travailler dans différents organismes, notamment Lutheran World Relief aux États-Unis.



Announcement

1. [Pathways to Prosperity 2022 Virtual Workshop Series](#) on Tuesdays at 1:00 – 2:15 PM EST. The workshops will take place on the same conference platform as was used for the P2P 2021 National Conference, with poster presentations, exhibitors, and networking functions still available, as well as videos and PowerPoints from conference plenaries and workshops.
2. Le [Forum sur l'intégration](#) est organisé par [Mireille Paquet](#) et [Antoine Bilodeau](#), tous deux professeurs au Département de science politique de l'Université Concordia, et l'Initiative de recherche sur l'immigration (IRI), avec le soutien financier du [Ministère de l'immigration, de la francisation et de l'intégration du Gouvernement du Québec](#).
3. [Newcomer resilience and COVID-19: Settlement policies and programs](#) , scheduled for February 23, 2022, from 12:30 to 1:45 pm by Zoom. Click [here](#) to register.
4. [BRIDGES 2022](#) , scheduled for February 24, 2022, from 9:45 am to 2:30 pm. BRIDGES 2022 is an annual Collaboration and Partnership Forum organized by the [Toronto East Quadrant Local Immigration Partnership \(TEQ LIP\)](#) in collaboration with Durham, Peel, city-wide Local Immigration Partnerships and the City of Toronto Newcomer Office. . Click [here](#) for more information and to register.

Other Important Information-Autre Information Importante

BMRC-IRMU Online Platforms:

[Website](#)

[Twitter](#)

[Facebook](#)

[YouTube](#)

For more information about this newsletter:

Subscribe

Past Issues

Translate ▾

Kaneff Tower, 803
Toronto, ON M3J 1P3
416-736-2100 Ext 20544
bmcirmu@yorku.ca

💡 Like this issue? [Forward it to a friend](#)



4700 Keele St, Toronto, ON M3J 1P3

<http://bmc-irmu.info.yorku.ca> | bmcirmu@yorku.ca | +1 (416) 736-2100

Copyright © 2016 Building Migration Resilience in Cities.

You are currently signed up to Company's newsletters as: [. To unsubscribe click here.](#)

This email was sent to <<Email Address>>

[why did I get this?](#) [unsubscribe from this list](#) [update subscription preferences](#)

BMRC-IRMU · 4700 Keele St, Toronto, ON · North York, On M3J 1P3 · Canada

