



[Trouble viewing images? View online version](#)

News and Updates. March 28, 2022- issue # 42

 [Visit Website](#)

 +1 (416) 736-2100
Ext 20544

Migration and resilience in urban Canada-Immigration et résilience en milieu urbain



Hi Everyone,

Spring is finally arriving in Toronto much to my relief. [Recordings](#) of the February webinars and the symposium are now available on the website . Check them out! The partnership will hold another webinar in [April](#) to report on recent research regarding international students. If you are attending the National Metropolis Conference in Vancouver, please watch for John Shields's presentations that draw on BMRC-IRMU research. Also, keep an eye out for information about the upcoming partnership meeting that is scheduled from the evening of May 4 to the afternoon of May 6. We hope everyone will have a chance to reconnect.

Check out the KM News. By the end of March, we will release an evaluation of a terrific program that helped to bring immigrant seniors into the digital world during the pandemic.

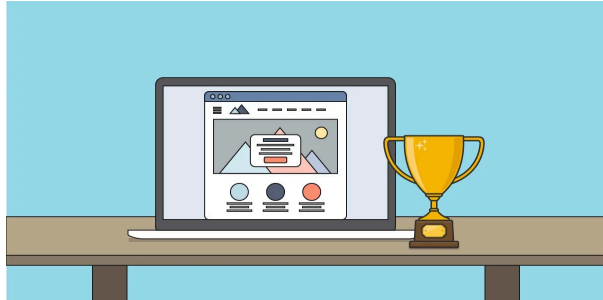
Staff changes are underway at the Secretariat. Starting April 1, 2022, Shehnaz will be working three days per week, so responses to your inquiries may be delayed. I appreciate everyone's patience as we adjust to the new schedule. Youssef Seddik who has been a communications assistant with the partnership since November is finishing his degree in April. In addition to imposing some welcome order on partnership records, Youssef recorded and edited interviews about recent reports and publications. Those of us who have worked closely with him greatly appreciate his thoughtful contributions. We wish Youssef the very best in his future endeavours.

Finally, Camila is starting to compile the information about partner contributions. I appreciate everyone's prompt responses to her inquiries.

York University is still reopening. Many people are in the office only part of the week. The best way to reach me and the Secretariat is through email, bmrcirmu@yorku.ca. I will be away much of April, so please contact Shehnaz or Camila with any questions or concerns.

Best wishes,

Knowledge Mobilization News



Webinar during the month of February 2022:

1. Webinar on [Newcomer resilience and COVID-19: Settlement policies and programs](#), on February 23, 2022 by [John Shields](#), Ryerson University, [Marshia Akbar](#), Ryerson University, [Valerie Preston](#), BMRC-IRMU. The recording and presentations are available [here](#).

Other Publications :

1. [English-speaking international students' perceptions and experiences in a bilingual university: A geographical approach to linguistic capital](#) by [Xiaohao Wu](#) and [Luisa Veronis](#) in The Canadian Geographer, February 27, 2022
2. [Elder abuse risk factors: Perceptions among older Chinese, Korean, Punjabi, and Tamil immigrants in Toronto](#) by Sepali Guruge, Souraya Sidani, [Guida Man](#), Atsuko Matsuoka, Parvathy Kanthasamy, Ernest Leung, York University, in Journal of Migration and Health, Volume 4, 2009.
3. [Resisting the Culture of Poverty Narrative: Perspectives of Social Assistance Recipients](#) by Stephanie Baker Collins, Tracy Smith-Carrier, [Amber Gazso](#), and Carrie Smith, York University.

Get to know our research projects and our researchers!



English-speaking international students' perceptions and experiences in a bilingual university: A geographical approach to linguistic capital

In this study, [Xiaohao Wu](#) and [Luisa Veronis](#) adopt Bourdieu's notion of linguistic capital to investigate English-speaking international students' diverse language experiences in the unique bilingual context of the University of Ottawa, the world's largest English-French bilingual university. Our aim is to advance understanding of the role of linguistic capital and its convertibility into cultural and economic capital by paying close attention to the linguistic power dynamics in different social spaces (on/off campus) and spheres of activity (e.g., academic studies, employment, language learning). We adopted a qualitative methodology and conducted 13 semi-structured interviews with English-speaking international graduate students from diverse countries of origin, with varied language skills, and enrolled in a variety of academic programs. We discuss four main themes: 1) preparation for and transition to a bilingual university, 2) employment and bilingualism, 3) perceptions of linguistic power dynamics in different social spaces, and 4) motivations and opportunities to acquire new linguistic capital. For the full article, please click [here](#).



We are pleased to feature [Youssef Seddik](#), .

Youssef Seddik is a senior in York University majoring in business. Nearing the end of his post-secondary education, he is ready to face the world and apply what he has learned from his education to start his career. Youssef is currently working with BMRC-IRMU. As a communication and knowledge mobilization assistant, he demonstrated adequate traits and readiness to work. .

Highlights

Addressing the Senior Digital Divide: Evaluating the Technology, Access and Support for Seniors (TASS) Project, by *Noor Din*, CEO, Human Endeavour, *Lois Kamenitz*, PhD, York Centre for Asian Research, York University, [Nancy Mandell](#), Professor, Department of Sociology, York University, [Larry Lam](#),

This impact evaluation study aims to assess the economic, social and cultural impact of the Technology, Access and Support for Seniors (TASS) project, initiated in May 2020 by Human Endeavour, a senior serving organization in York Region. Recognizing the need to pivot to online program delivery, Human Endeavour and community partners obtained grants to purchase and distribute free, over 400 easy to use, integrated android tablets preloaded with apps and data to vulnerable seniors, who were identified by our community partners United Way Greater Toronto, the Municipalities of York and Muskoka, and eleven senior serving organizations.

The full report can be found [here](#) and the executive summary is available [here](#).

Community Partner



Reza Shahbazi, Founding member and Executive Director of New Canadians' Centre of Excellence Inc.

[Reza Shahbazi](#) For over twenty years, Reza Shahbazi has worked to improve the outcomes of immigrants and refugees in Canada with a focus on two interrelated areas: experienced program and service delivery at the community level and policy development at the provincial and national level.

Announcements

1. [Pathways to Prosperity 2022 Virtual Workshop Series](#) on Tuesdays at 1:00 – 2:15 PM EST. The workshops will take place on the same conference platform as was used for the P2P 2021 National Conference, with poster presentations, exhibitors, and networking functions still available, as well as videos and PowerPoints from conference plenaries and workshops.
2. Webinar on [International Students and their Resilience: Mapping the journeys of international students' resilience](#), on April 21, 2022 by [Marshia Akbar](#), Ryerson University, [Jana Borrás](#), York University, [Janice Phonepraseuth](#), York University, [Nancy Mandell](#), York University, [Jill Hanley](#), McGill University, [Erfaneh Razavipour](#), McGill University and [Dan Hiebert](#), University of British Columbia . Register [here](#).

BMRC-IRMU Online Platforms:[Website](#)[Twitter](#)[Facebook](#)[YouTube](#)**For more information about this newsletter:**

York University
4700 Keele St.
Kaneff Tower, 803
Toronto, ON M3J 1P3
416-736-2100 Ext 20544
bmcirmu@yorku.ca

💡 Like this issue? [Forward it to a friend](#)



4700 Keele St, Toronto, ON M3J 1P3
<http://bmc-irmu.info.yorku.ca> | bmcirmu@yorku.ca | +1 (416) 736-2100
Copyright © 2016 Building Migration Resilience in Cities.

You are currently signed up to Company's newsletters as: [. To unsubscribe click here.](#)

This email was sent to <<Email Address>>

[why did I get this?](#) [unsubscribe from this list](#) [update subscription preferences](#)
BMRC-IRMU · 4700 Keele St, Toronto, ON · North York, On M3J 1P3 · Canada

