




[Trouble viewing images? View online version](#)

News and Updates. June 29, 2022- issue # 44

 [Visit Website](#)

 +1 (416) 736-2100
Ext 20544

Migration and resilience in urban Canada-Immigration et résilience en milieu urbain



Hello Everyone,

The partnership is planning a celebration scheduled tentatively for the second half of November. In addition to reviewing recent research and celebrating the partnership's accomplishments, people are eager to reflect on the benefits and challenges of partnership across sectors and disciplines. Let us know your ideas for the celebration and watch for more information in the next newsletter. A wonderful video of John Shield's presentation entitled The Future of the Ontario Settlement Sector is available [here](#). Please distribute the link widely. We are eager for survey participants to hear what we learned, especially as Canada settles growing numbers of Afghan and Ukrainian refugees. Equally relevant recordings from BMRC-IRMU webinars can also be accessed [online](#). Check out the KM News for information about recent Research Digests.

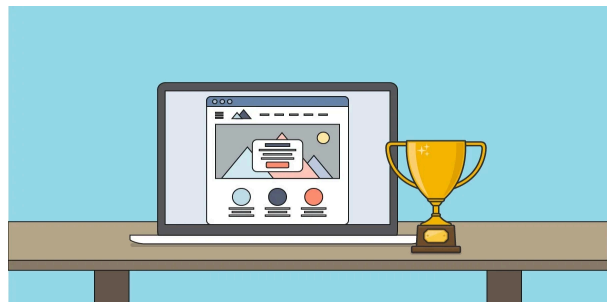
At its May meeting, the Steering Committee asked for volunteers to plan the proposed celebration. Let us know if you are interested and watch for more details in the next newsletter.

Camila asked me to thank all participants in the May partnership meeting for submitting their receipts so promptly. Your reimbursements are now being processed by the university.

Summer is in full swing in Ontario. The partnership staff are planning vacations, so responses may be delayed. We appreciate your patience as people take a well-earned break and recharge for the fall. A gentle reminder that Shehnaz is working three days per week, usually from Monday to Wednesday. . The best way to reach us is still through email, bmrcirmu@yorku.ca.

Best wishes,

Valerie

**List of research reports:**

1. [Pandemic Response Survey Results OCASI Agency Management](#) by [Jayesh D'Souza](#), York University, Manolli Ekra, [Valerie Preston](#), York University and [John Shields](#), Toronto Metropolitan University. The executive summary is available [here](#). Le sommaire est disponible [ici](#).
2. [Pandemic Response Survey Results OCASI Agency Frontline Workers](#) by [Jayesh D'Souza](#), York University, Manolli Ekra, [Valerie Preston](#), York University and [John Shields](#), Toronto Metropolitan University. The executive summary is available [here](#). Le sommaire est disponible [ici](#).

List of research digest :

1. [French Language Skills and Resilience among Quebec Asylum Seekers](#), by [Jill Hanley](#), Nicole Ives, Janet Cleveland, Manuel, Salamanca Cardona, Marianne Turcotte-Plamondon with Moussa Seck from McGill University. The research digest is available [here](#). Le recueil de recherche est disponible [ici](#).

Other Articles/Publications :

1. [Preparing Newcomers for Life in Canada”, Canadian Immigration Summit 2022: Driving Innovation, Resilience, and Responsiveness](#) by [John Shields](#), Toronto Metropolitan University, Conference Board of Canada, May 24-26, 2022, (Virtual), 2022.
2. [Critical analysis of nurses' labour market effectiveness in Canada: The hidden aspects of the shortage](#) by Ruolz Ariste, Ali Béjaoui and [Anyck Dauphin](#) Université du Québec en Outaouais, Scinapse, April 2019.
3. [After the International Organization for Migration: recruitment of Guatemalan temporary agricultural workers to Canada](#) by [Christina Gabriel](#) and Laura Macdonald, Carleton University, in Journal of Ethics and Migration Studies, 2018 .

The Virtual Library at IRCC

The [IRCC virtual library](#) is a selective systematization of electronic resources about newcomers, refugees, and immigration and settlement policy. Freely available, the resources include many of the documents that were previously available through the virtual libraries of the five former Metropolis Centers. Please consult the [Virtual Library](#) at IRCC to review the catalogue and identify relevant digital resources. To obtain access to digital resources and for more information, please contact Eleanor Berry at IRCC by email at Eleanor.Berry@cic.gc.ca.

Get to know our research projects and our researchers!



Pandemic Response Survey Results OCASI Agency Management

This technical report documents the responses to a survey of managers from member agencies of the Ontario Council of Agencies Serving Immigrants (OCASI) conducted between November 26 and December 23, 2021. A separate survey of frontline workers has its own report. The survey was undertaken in collaboration with OCASI by the Building Migrant Resilience in Cities / Immigration et résilience en milieu urbain (BMRC-IRMU), a SSHRC-funded partnership. A Settlement Services Working Group of community-based and academic members from BMRCIRMU helped to guide the research. The survey instrument was approved by the Human Participants Review Committee at York University. From the perspective of managers from OCASI member agencies, the survey investigates the impacts of COVID-19 on agency activities and other dimensions of agency operations during the twelve-month period following the pandemic's first wave. Many questions parallel questions from a survey conducted by OCASI that focused on the first wave of the pandemic. For the full report, please click [here](#) and the executive report is available [here](#). Le rapport exécutif est disponible [ici](#).



We are pleased to feature Saad El Hakmi, PhD in Policy Studies at Toronto Metropolitan University.

Saad El Hakmi is currently pursuing his PhD in Policy Studies at Toronto Metropolitan University. He holds a Master of Arts in Immigration and Settlement Studies and worked on various community-based projects related to immigrants in Canada. At present, Saad is also a Research Assistant at The Ryerson Centre for Immigration and Settlement with Prof. Sutarna Ghosh. His research interests are advocacy for democracy and social inclusion of racialized communities, civic and democratic engagement, labour market experiences of immigrants, immigration laws and policies, and migrants' identity. His doctoral dissertation will examine the discrepancies between existing integration policies and newcomers' exclusion from the social, economic, and political spheres in Canada. It will also highlight the role of multi-actor partnerships (i.e., settlement agencies, universities, and NGO's) in easing such integration through active policy advocacy.

Highlights

French Language Skills and Resilience among Quebec Asylum Seekers , by [Jill Hanley](#), *Nicole Ives, McGill University, School of Social Work, Janet Cleveland, IU SHERPA, Manuel Salamanca Cardona, UQAM Sociology, Marianne Turcotte-Plamondon, IU SHERPA, with Moussa Seck, IU SHERPA.*

French is essential to full integration in Quebec. In a recent survey of asylum seekers, uptake of "francisation" courses was enthusiastic; 70% had participated in courses and 29% wanted to. Yet barriers to accessing French courses include: the need to work, ineligibility for subsidized daycare, and long waitlists. Bill 96 will improve access to francisation classes. But, it forbids public service from using languages other than French (or English in bilingual institutions) to communicate with newcomers who have been in Quebec more than 6 months, a serious threat to social rights and integration.

The research digest is available [here](#). Le recueil de recherche est disponible [ici](#).

Community Partner



Hindia Mohamoud , director of the Ottawa Local Immigration Partnership

Hindia Mohamoud has close to twenty years of experience with building community solutions through research, partnership development, and program design. She is currently the director of the Ottawa Local Immigration Partnership, where she is responsible for facilitating the establishment and implementation of community-wide vision and strategy for improving the settlement and integration of immigrants in Ottawa. Click [here](#) for more information.

Steering Committee

At its June meeting, the Steering Committee reviewed the partnership's finances, noting that there is still uncertainty about funds transferred to other universities. At the time of the meeting, only five universities had sent forms detailing the spending of transferred funds and only half the transferred funds had been spent by March 31, 2022. There will be no extensions of transfers past December 31, 2022. After a lengthy discussion, the Steering Committee recommended that a partnership meeting be planned to celebrate the achievements of the partnership in November 2022. Planning has begun.

The Steering Committee also received with gratitude the KM Report prepared by Shehnaz Fakim. Committee

Secretariat will compile its current information and be in touch with individual researchers.

Announcements

Osgoode's IFLS is accepting fellowship applications for the 2022-23 academic year.

This fellowship supports the work of young and mid-career scholars from around the world by providing an intellectual community, shared physical space (for those candidates who choose to visit Osgoode in-person), academic engagement with research presentations, access to York libraries, and under certain circumstances modest financial support for very specific research projects conducted during the fellowship stint. Such financial support requires a separate application during the fellowship. Fellowship time is flexible, ranging from a month to a full semester and could be virtual or in-person depending on the candidates' preference.

The fellowship is open to scholars working in the areas of law, feminism and public policy, broadly interpreted. Fellows are expected to finish or make significant progress on an existing research project toward publication and make an academic presentation during their time at Osgoode. Fellows are also expected to participate actively in the Institute's events. Researchers interested in feminism and disability and women and property are particularly encouraged to apply.

Application deadline is July 15, 2022 and the form could be found [here](#).

Questions may be directed to Ms. Lielle Gonsalves at lgonsalves@osgoode.yorku.ca.

Call for Abstracts:

Migration Policy Practice focuses on policy-oriented research and analysis with the aim to contribute to a better understanding of the multidimensional aspects of migration and inform migration policies at the national, regional and international levels. Submissions are welcome on a range of topics including evolving/new migration patterns and processes, as well as particular migrant groups such as migrant workers, international students, displaced persons (IDPs and refugees), and/or specific issues related to gender/demography, nationality, migration status, among others. Submissions highlighting new methodologies in the field of migration and/or opportunities for innovative policies and practices for State and civil society actors are encouraged. For more information, click [here](#).

Canadian Association for Refugee and Forced Migration Studies (CARFMS)2022/Association canadienne des études sur les réfugiés et la migration forcée (ACERMF):

Call for Papers Submission -14th Annual Conference of the Canadian Association for Refugee and Forced Migration Studies (CARFMS), hosted virtually in collaboration with The Human Rights Program at St Paul's University College at the University of Waterloo on 2 – 4 November 2022.

Appel à contributions – « Crise » et migration forcée : Manifestations de pouvoir dans un monde en transition -14e Conférence annuelle de l'Association canadienne des études sur les réfugiés et la migration forcée (ACERMF)- En ligne en collaboration avec le programme des droits de la personne du Collège universitaire St Paul de l'Université de Waterloo, le 2 – 4 novembre 2022.

For more information on the call for proposal on Crisis and Forced Migration: Manifestations of power in a changing world, please click [here](#).

BMRC-IRMU Online Platforms:

[Website](#)

[Twitter](#)

[Facebook](#)

[YouTube](#)

For more information about this newsletter:

York University
4700 Keele St.
Kaneff Tower, 803
Toronto, ON M3J 1P3
416-736-2100 Ext 20544
bmrcirmu@yorku.ca

💡 Like this issue? [Forward it to a friend](#)



4700 Keele St, Toronto, ON M3J 1P3
<http://bmrc-irmu.info.yorku.ca> | bmrcirmu@yorku.ca | +1 (416) 736-2100
Copyright © 2016 Building Migration Resilience in Cities.

You are currently signed up to Company's newsletters as: [. To unsubscribe click here.](#)

This email was sent to <<Email Address>>
[why did I get this?](#) [unsubscribe from this list](#) [update subscription preferences](#)
BMRC-IRMU · 4700 Keele St, Toronto, ON · North York, On M3J 1P3 · Canada

