



[Trouble viewing images? View online version](#)

News and Updates. September 29, 2022- issue # 45

 [Visit Website](#)

 +1 (416) 736-2100
Ext 20544

Migration and resilience in urban Canada-Immigration et résilience en milieu urbain



Hello Everyone,

As we negotiate a return to in person activities, I am pleased to report that the partnership has been busy. Please check out the KM News about recently published research digests and a new policy preview. The Executive Committee also approved several recent requests for travel money so watch for news about recent presentations.

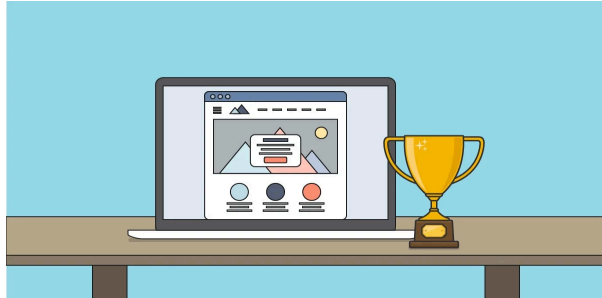
At its last meeting, the Steering Committee also approved tentative plans for a final celebration of the partnership in late 2022 or early 2023. More details will follow.

There is also change in the partnership. Jayesh D'Souza, a Post-Doctoral researcher with the Future of the Settlement Sector project is leaving for a position in the federal government. His work has ensured the success of the surveys in Quebec and Ontario. Although we have never met in person, John and I will miss his enthusiasm, expertise, and ingenuity. I am also very sad and very happy to tell you that Shehnaz Fakim finished as BMRC-IRMU Research Manager on August 31, 2022. Shehnaz has taken a full-time position with a recently funded partnership that will benefit from her expertise and the experience that she gained working with all of us. For the moment, Shehnaz will be working a few hours to help with the transition as we seek a replacement, although it will be hard to replace Shehnaz's commitment to KM and her organizational skills that have contributed greatly to the individual and combined success of the partnership. Shehnaz helped us achieve our KM goals, introduced administrative order, and worked closely with the Work Study students among numerous other accomplishments while working remotely and dealing with the pandemic. I know everyone joins me in thanking Shehnaz and wishing her all the very best in the future. .

We are sorting out the days when people will be in the office, but it looks as if Wednesday should find most of us there. Please contact us by email for the moment and please send all BMRC-IRMU-related emails to the main email account, bmrcirmu@yorku.ca, that is monitored regularly.

Best wishes,

Knowledge Mobilization News



List of research digest:

1. [Indian International Students to Community and Private Colleges in the Greater Toronto Area](#) by [Sutama Ghosh](#), and [Sohail Shahidnia](#), Toronto Metropolitan University. Le recueil de recherche est disponible [ici](#).

List of policy preview:

1. [The Future of Immigrant-Serving Agencies in Ontario: Meeting the Challenges of Hybrid Service Delivery](#) by Hiba Shaath, York University, [Valerie Preston](#), York University, [John Shields](#), Toronto Metropolitan University, with [Debbie Douglas](#), OCASI and [Tara Bedard](#), Immigration Partnership, Region of Waterloo.

Other Articles/Publications :

1. [Migration and Resilience in Urban Canada: Why Social Resilience, Why Now?](#) by [Valerie Preston](#), York University, [John Shields](#), Toronto Metropolitan University and [Marshia Akbar](#), Toronto Metropolitan University, *Journal of International Migration and Integration* (2022) 23:1421–1441.
2. Presentation on [International Students, Resilience and Systems of Support: Who is Responsible?](#) by Kanchan Ladhar, [Margaret Walton-Roberts](#), Wilfrid Laurier University, [Jenna Hennebry](#), Wilfrid Laurier University at Canadian Society for the Study of Higher Education (CSSHE), 2021.
3. [A New Politics? Symposium on Dauvergne's The New Politics and the End of Settler Societies](#) by [Mireille Paquet](#), Concordia University, *International Migration*, 2020.

Get to know our research projects and our researchers!



Gender and Resilience Among Temporary Migrants in Waterloo Region

Gender affects migrants' entry to Canada, access to services, and how they cope with integration challenges. Gender-responsive services and programming do not concentrate exclusively on women. Rather, they take account of different experiences of men, women, and gender non-binary individuals and their impacts on migrant resilience. The Kitchener-Waterloo city network examines the experiences of temporary migrants and asylum claimants seeking to transition to permanent residence. Some gender-responsive programming exists, but it must be made more accessible and relevant. For the full research digest, please click [here](#). Le recueil de recherche est disponible [ici](#).



We are pleased to feature Neil Amber Judge, PhD Candidate, Department of Geography, Wilfrid Laurier University.

Neil Amber Judge, PhD candidate, Department of Geography, Wilfrid Laurier University, works with the International Migration Research Centre (IMRC) at the Balsillie School of International Affairs. He did his M.Phil. from the School of International Studies, Jawaharlal Nehru University, New Delhi. His research focuses on international student migration from India to Canada. He has also worked as a Research Assistant on the project on International student resilience, co-authored a chapter due to be published in the 'Handbook of Migration and Family', Edward Elgar Publishing (edited by Waters and Yeoh), and published a book review in *The Canadian Geographer / Le Géographe Canadien*.

Highlights

Immigrant Settlement Agencies in Canada: A Critical Review of the Literature through the Lens of Resilience, by Riley Bushell and [John Shields](#), Toronto Metropolitan University. .

This report offers a comprehensive critical literature review of the role of various institutional actors in the immigration and settlement process in Canada. The core concept of this report is resilience as it pertains to immigration in Canada, focusing particularly on cities in the major immigrant-receiving provinces of Ontario and Quebec. Resilience has been defined as “the capacity of individuals, communities and systems to survive in the face of stress and shocks, and even transform when conditions require” (Akbar 2017, ii). Successful settlement requires the individual resilience of newcomers in Canada and institutional resilience from the organizations, communities and government systems, which either aid in these processes or fail to do so. These actors are inextricably linked, they stand to benefit where Canadian institutions are strengthened, and made more responsive to the needs of immigrant and refugee communities..

The research report is available [here](#). Le sommaire du raport est disponible [ici](#).

Community Partner



Lucia Harrison , Executive Director, Kitchener-Waterloo Multicultural Centre

Lucia Harrison (English, Dutch) Lucia has been our Chief Executive Officer since 2006 and has been part of our organization since 2000. Originally from the Netherlands, she immigrated to Canada as a child with her family and became a Canadian Citizen in 1967. She studied business at Wilfrid Laurier University and Third World Studies at Conrad Grebel College. Click [here](#) for more information.

Other Important Information-Autre Information Importante

BMRC-IRMU Online Platforms:

[Website](#)

[Twitter](#)

[Facebook](#)

[YouTube](#)

For more information about this newsletter:

York University
4700 Keele St.
Kanef Tower, 803
Toronto, ON M3J 1P3
416-736-2100 Ext 20544
bmrcirmu@yorku.ca

Subscribe

Past Issues

Translate ▼

Like this issue? [Forward it to a friend](#)



4700 Keele St, Toronto, ON M3J 1P3

<http://bmrc-irmu.info.yorku.ca> | bmrcirmu@yorku.ca | +1 (416) 736-2100

Copyright © 2016 Building Migration Resilience in Cities.

You are currently signed up to Company's newsletters as: [To unsubscribe click here.](#)

This email was sent to <<Email Address>>

[why did I get this?](#) [unsubscribe from this list](#) [update subscription preferences](#)

BMRC-IRMU · 4700 Keele St, Toronto, ON · North York, On M3J 1P3 · Canada

