



[Trouble viewing images? View online version](#)

News and Updates. February 2023 - issue # 48

 [Visit Website](#)

 +1 (416) 736-2100  
Ext 20544

## Migration and resilience in urban Canada-Immigration et résilience en milieu urbain



Hello Everyone,

The new year began very successfully with a webinar entitled *Are International Students Disposable Workers?*. The video of the panel discussion will be made available on our website in the coming days. I want to thank all the panelists, the International Students Working Group, and Prof. Margaret Walton-Roberts, who chaired this timely and

important webinar.

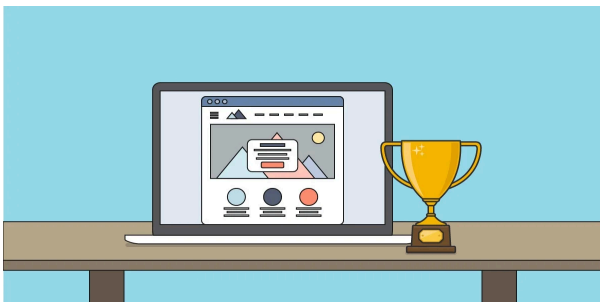
More news about recent BMRC-IRMU research can be found under KM News and Announcements. Check out the reports documenting the surveys of immigrant-serving agencies in Ontario that are now available on the [website](#). To help you take advantage of the 25th Metropolis Canada Conference, we have listed some of the many sessions in which BMRC-IRMU affiliates will present their research. For news about the most recent Steering Committee meeting, please keep reading.

It is my pleasure to introduce Nicole Watson from the Toronto Newcomer Office who will now participate in BMRC-IRMU. In her work at the city, Nicole has contributed to numerous policies and programs addressing the challenges confronting marginalized people in Toronto. In addition to working on the Refugee Resettlement Program, she also contributed to Access T.O. for Undocumented People and the Refugee Capacity Plan. We are lucky to benefit from her expertise and experience.

I look forward to seeing many of you in person at the 25th Metropolis Canada Conference.

All the best,

Valerie



#### List of research digest:

1. **Coming Soon:** Understanding the role of language and linguistic capital through English- and French-Speaking International Students' Experiences at a Bilingual University by Luisa Veronis and Xiaohao Wu.

#### Webinars:

1. *Are International Students Disposable Workers?* - January 26, 2023

#### Watch for BMRC-IRMU involvement in the 25th Metropolis Canada Conference:

1. Immigration Policy and Practice: Lessons from a Pandemic with Hindia Mohamoud (OLIP), Tara Bedard (Waterloo Region), John Shields (Toronto Metropolitan University), Jill Hanley (McGill University) Muna Osman (OLIP), and Valerie Preston (York University), **March 16, 2023**.
2. Experiences of International Students in Canada Workshop with Discussant: Valerie Preston (York University) and Panelists: Sutama Ghosh (Toronto Metropolitan University), Saad El Hakmi (Toronto Metropolitan University), Luisa Veronis (University of Ottawa), and Marshia Akbar (Toronto Metropolitan University), **March 16, 2023**.
3. Établissement durable de personnes immigrantes en agriculture en milieu rural au Québec with Anyck Dauphin (Université du Québec en Outaouais), **March 16, 2023**.
4. Germany-Canada perspectives on skilled workers' immigration policies and integration experiences with Marshia Akbar (Toronto Metropolitan University), Luisa Veronis (University of Ottawa), and Christina Gabriel (Carleton University), **March 17, 2023**.
5. Immigrants and Employment: New Evidence of Race and Gender inequalities Workshop with Brian Ray (University of Ottawa), Deborah McPhee (Brock University), Jean-Philippe Gauvin (Concordia University), Antoine Bilodeau (Concordia University), Jelena Zikic (York University), Tina Sharifi (York University), Marlee Mercer (York University), and Viktoriya Voloshyna (York University), **March 16, 2023**.

## Steering Committee

After learning that access to partnership funding was extended, the Steering Committee approved requests for funding extensions from D. McPhee and C. Gabriel, whose research about migrant workers in the cannabis industry and immigrant women in the labour market, respectively was completely disrupted by the pandemic.



The committee also acknowledged with gratitude the information

about changes in research plans from F. Schlosser and B. Ray. At the direction of the Steering Committee, Secretariat staff contacted all other researchers with outstanding funds to remind them that funding must be spent by December 31, 2022.

The Steering Committee asked that the Secretariat survey partnership affiliates about their availability for a last partnership meeting.

## Get to know our research projects and our researchers!



### **The Role of Neighbourhood Context in Shaping Migrant Resilience: a Comparative Study of Three Neighbourhoods in Ottawa-Gatineau**

*Project Team: Luisa Veronis, University of Ottawa, Anyck Dauphin (UQO), Brian Ray (uOttawa), Hindia Mohamoud (OLIP), CÉSOC (Ottawa), SITO and APO (Gatineau), Cristian Penca and Florina Gaborian (Ville de Gatineau), Lily Xia (MA Candidate in Geography at uOttawa), Lina El Bakir (BA student in Law and International Development and Globalization Studies at uOttawa), and Rachel Walker (BA student in Anthropology at uOttawa).*

Neighbourhoods, through their built and social spaces – location, amenities, demographic composition, service provision, safety, etc. – can play a key role in newcomers' ability to successfully integrate and participate in Canadian society upon arrival. The aim of our project was to examine why newcomers settle in given neighbourhoods, and in turn how neighbourhood characteristics shape their integration and resilience. We undertook a collaborative, qualitative study of three inner city neighbourhoods in Ottawa-Gatineau, a second-tier city located at the interprovincial border between Ontario and Quebec. Our methodology consisted of a critical ethnography combining Census data analysis, participant observation in the neighbourhoods, photovoice interviews with newcomer families, and a media analysis. Drawing on a social resilience approach, we developed a framework that combines a livable cities perspective with migrant place-making and the revanchist city.

offers many advantages and resources (e.g., access to services, social networks, mutual solidarity) that enhance newcomers' resilience, thus facilitating their settlement and integration. Nevertheless, we also found that these areas are highly coveted by investors and developers because of their redevelopment potential; thus, low-income residents are subject to landlord abuse, developer-led displacement, cutbacks to social programs, and government neglect. Some newcomers and immigrant families are especially vulnerable to these issues due to their immigrant status, socioeconomic precarity, and language barriers, which may prevent or limit timely and effective community mobilizing against their effects. As such, these neighbourhoods have arguably become the most recent version of what Neil Smith (1996) called the "new urban frontier" of class struggle.



We are pleased to feature **Sohail Shahidnia**, Ph.D. Candidate in Policy Studies at Toronto Metropolitan University.

Sohail holds a Master's degree in Criminology and Sociolegal Studies from the University of Toronto. He is currently a Ph.D. Candidate in Policy Studies at Toronto Metropolitan University. Sohail works as a Co-Principal Investigator with Dr. Sutama Ghosh on an SSHRC-funded project titled "COVID-19 challenges and resilience of international students and local institutions in the city of Greater Sudbury." He also works as a research assistant for Dr. Nancy Mandell, Dr. Sutama Ghosh, and Dr. Larry Lam on the research project "University to Work Transitions of International Students in Canada."

Sohail's thesis focuses on the retention of international students in the northern cities of Greater Sudbury and North Bay. In view of an ageing population, both cities adopted several policies to attract international students; yet, they struggle to retain them. This project aims to conduct evidence-based research to inform institutions in developing effective strategies for the successful retention of international students.

## Highlights



**Un geste d'hospitalité aux demandeurs d'asile. Une analyse de la mobilisation du collectif Bridges not Borders – Créons des ponts**

*By Chedly Belkhdja and Cassandre Gratton*

### Abstract

This article focuses on the mobilization of a collective created by citizens, Bridges not Borders (BnotB), that has been working to defend the asylum seekers that cross the Canada-U.S. border "irregularly" since 2017.

Based on content analyses and semi-structured interviews, this case study allows us to present a “bottom up” form of action, led by citizens mobilized by migration issues, which we define under the gesture of hospitality.

Refuge: Canada's Journal on Refugees / Refuge: revue canadienne sur les réfugiés 2022, Vol. 38, No. 2, 1–19.

<https://doi.org/10.25071/1920-7336.40878>.

## Community Partner



**Florina Gaborean** compte plusieurs expériences professionnelles à la Ville de Gatineau. Depuis 2019, elle occupe le poste de coordonnatrice à la diversité sociale et culturelle au Service des loisirs, des sports et du développement des communautés. Elle assure la mise en œuvre des politiques municipales en matière de diversité sociale et culturelle et établit des partenariats avec les acteurs du milieu et les bailleurs de fonds (Ministère de l'immigration, de la francisation et de l'inclusion). Elle coordonne les activités de la Commission du vivre-ensemble et de l'immigration et mets en œuvre, avec des partenaires communautaires et d'autres services municipaux, des projets favorisant l'établissement et l'intégration des personnes nouvellement arrivées.

Au niveau provincial, Florina participe à la gouvernance du Réseau des municipalités en immigration et en relations interculturelles (RÉMIRI). Elle a contribué au déploiement de plusieurs initiatives provinciales dont un livre sur les politiques interculturelles au Québec et l'adhésion au Programme des cités interculturelles du Conseil de l'Europe. Grâce à cet échange d'expertise, le RÉMIRI a été sélectionné finaliste pour les Prix d'excellence de l'Institut de l'Administration Publique du Québec en 2022.

Titulaire d'un Ph.D. en anthropologie, Florina est également chercheure et professeure à temps partiel à l'Université d'Ottawa depuis 2012. Ses domaines de spécialisation couvrent les transitions familiales (garde partagée, familles recomposées), les politiques publiques, la diversité sociale et culturelle, les normes sociales et juridiques et le changement social.

## Announcements

- Several BMRC members will present at the [25th Metropolis Canada Conference](#). Please see the Knowledge Mobilization News Section (above) for more details. For specific workshop times, please refer to the [Preliminary Program](#).
- [International Student Connect](#) (ISC) Project offers an ISC newsletter. The ISC Newsletter is a quarterly electronic publication containing project updates, news, policy changes, and relevant settlement information concerning

**Check out our website for:**

- Two technical reports for the management survey of immigrant-serving agencies in Quebec (one in [English](#) and one in [French](#))
- Two technical reports for the worker surveys in Quebec (one in [English](#) and one in [French](#)).

**Coming Soon...**

- Webinar Video: *Are International Students Disposable Workers?* will be made available on the [BMRC website](#) and [YouTube channel](#).

## Other Important Information-Autre Information Importante

**BMRC-IRMU Online Platforms:**[Website](#)[Twitter](#)[Facebook](#)[YouTube](#)**For more information about this newsletter:**

York University  
4700 Keele St.  
Kaneff Tower, 803  
Toronto, ON M3J 1P3  
416-736-2100 Ext 20544  
[bmrcirmu@yorku.ca](mailto:bmrcirmu@yorku.ca)

💡 Like this issue? [Forward it to a friend](#)



4700 Keele St, Toronto, ON M3J 1P3

<http://bmrc-irmu.info.yorku.ca> | [bmrcirmu@yorku.ca](mailto:bmrcirmu@yorku.ca) | +1 (416) 736-2100

Copyright © 2016 Building Migration Resilience in Cities.

**Subscribe**

**Past Issues**

are currently being sent to Company's newsletters as: [To unsubscribe click here.](#)

**Translate** ▼

This email was sent to <<Email Address>>

[why did I get this?](#) [unsubscribe from this list](#) [update subscription preferences](#)

BMRC-IRMU · 4700 Keele St, Toronto, ON · North York, On M3J 1P3 · Canada