



[Trouble viewing images? View online version](#)

News and Updates. April 2023 - Issue # 49

 [Visit Website](#)

 +1 (416) 736-2100
Ext 20544

Migration and resilience in urban Canada-Immigration et résilience en milieu urbain



Hello Everyone,

The partnership was very active at the [25th Metropolis Canada Conference](#), sponsoring two sessions that reported on the pandemic and the settlement sector in Ontario and Quebec, as well as recent research about gendered and racialized employment experiences of immigrants. Partnership affiliates also contributed to sessions about international students, immigrant entrepreneurs, and francophone immigrants. I want to thank Hindia Mohamoud and Enrico Del Castello for their generous comments about the partnership. Several partners including Sutama Ghosh spoke in glowing terms about the opportunities for knowledge mobilization provided through BMRC-IRMU. Check the KM News below to learn where slides and presentations, as well as presentations at other conferences, can be found.

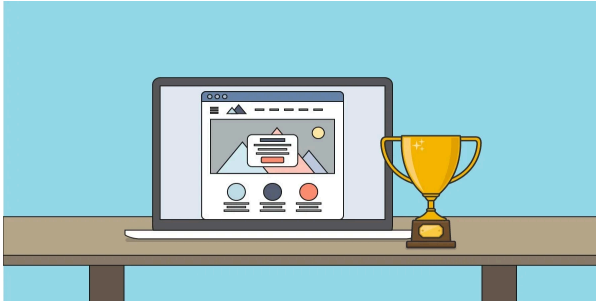
Although planning for the Final Partnership Meeting is underway, June is looking unlikely, as many BMRC affiliates are unable to attend. Watch out for information about the meeting in the coming weeks. In the meantime, please let the Secretariat know your ideas about topics and formats for the meeting with an email to bmrcirmu@yorku.ca. I want to thank Florina Gaborean and Anyck Dauphin who have been working hard to help us organize this meeting.

April is a month of transition at BMRC. Farah Abdelaziz, who has worked as a KM Assistant since Summer, 2020 is finishing her degree and graduating. Farah's success taking on a new job completely remotely and in the midst of a pandemic is very impressive. On behalf of the entire partnership, I want to thank Farah for her work on the website and wish her the very best with all future endeavours. The Secretariat remains focused on Knowledge Mobilization activities, so please review the KM News "Research Digest" section of the newsletter. We would like to ensure that there is *at least one* Research Digest for every project. We look forward to hearing from you.

With spring comes the annual request for information about contributions. We know that many contributions have already been completed; however, the time that people contribute to BMRC-IRMU represents an important in-kind contribution that we want to acknowledge and highlight.

Valerie

Knowledge Mobilization News



List of research digest:

1. **Coming Soon:** Understanding the role of language and linguistic capital through English- and French-Speaking International Students' Experiences at a Bilingual University by Luisa Veronis and Xiaohao Wu.

Call for Research Digests:

We would like to request the submission of **at least one** Research Digest for each project funded by BMRC. This is an excellent opportunity to mobilize your research and make it available to a wide audience! Research Digests offer BMRC affiliates and their students the opportunity to collaborate, disseminate project results, and highlight published papers. Additionally, graduate students and Post-Docs greatly benefit from the chance to co-author plain language research summaries and receive mentorship from BMRC affiliates. Some examples of Research Digests which link to and highlight published papers include:

1. [Migration and Resilience in Urban Canada: Why Resilience? Why Now?](#)
2. [Resilience of International Students to enhance their food security](#)
3. [Promoting Migrant Resilience through Collective Action](#)

Please email your Research Digest proposals to bmrcirmu@yorku.ca.

Webinars:

1. The full video and segments of the BMRC Webinar entitled, *Are International Students Disposable Workers?* which took place on January 26, 2023, are **now available** on our [website](#) and [YouTube channel](#)
1. The 25th Metropolis Canada Conference presentation slides by BMRC affiliates are now available on the [BMRC website](#).



The committee reviewed and approved seven requests for funding travel and participation by 11 partnership affiliates in the National Metropolis Conference, March 16-18, in Ottawa.

Steering Committee

In its March meeting, the Steering Committee approved June 13-14, 2023, as the dates for the last partnership meeting; however, June is currently looking unlikely, as most BMRC affiliates appear to be unavailable. The possibility of a late September meeting is being explored. **Travel funds will be made available to all participating co-investigators, collaborators, and post-docs.** Planning is ongoing so partnership members are encouraged to propose topics and formats for the partnership meeting. After an in camera discussion, the Steering Committee also approved a contract extension.

Get to know our research projects and our researchers!



Understanding the Context of Resiliency of Older Immigrant Entrepreneurs

By Gerry Kerr, Associate Professor, Strategy & Entrepreneurship, Odette School of Business, University of Windsor

This research examines the characteristics of resiliency of older immigrants who are entrepreneurs or entrepreneurial team members. The research builds on the growing management literature focused on immigrant/migrant entrepreneurship and the less-developed research devoted to older entrepreneurs. This project is the first to examine older immigrant entrepreneurs and explore the nature of their resiliency and impact on other migrants and the host community.

Given the undeveloped state of the literature, the research employs qualitative methods in a mixed embeddedness approach (Kloosterman, 2010; Kloosterman and Rath, 2003; Rusinovic, 2006) to complete an exploration of relationship between resiliency and older entrepreneurship exhibited by immigrants to Canada.

allowing for a more targeted research effort than can often be undertaken in much larger jurisdictions. Despite its size, Windsor is the fourth-most diverse community in Canada (Ontario Immigration, 2016). Windsor is a border community, an integral part of a larger economic ecosystem centered in Michigan as well as the one in Southern Ontario. Windsor is also a recognized manufacturing and innovation nexus for the country. Therefore, Windsor's distinct profile combines a manageable size for an exploratory study with high levels of diversity, migrant movement, and economic activity.

This study is headed by [Dr. Gerry Kerr](#), who holds a Ph.D. from York University (Schulich School of Business). Dr. Kerr joined the University of Windsor's Odette School of Business in 2001. Dr. Kerr's research spans aspects of Entrepreneurship and Strategic Management, both of which he has taught at the graduate and undergraduate levels. At the Odette School of Business, Dr. Kerr has served as Area Chair for Strategy & Entrepreneurship and as M.B.A. Program Director. Under his leadership, tighter alignment was created in the M.B.A. between classroom and practice. This work included placing greater emphasis on general management formation, with entrepreneurship and innovation as core activities.

For more information regarding this project, please [click here](#).



We are pleased to feature **Nelson Graham**, a Ph.D. Candidate in Global Governance at the Balsillie School of International Affairs. Nelson has a Master's degree in Geography from Memorial University of Newfoundland and Labrador, and he is currently conducting his SSHRC-funded project titled "Understanding the role of higher education institutions in the integration of international students" with advisor Dr. Margaret Walton-Roberts. Nelson has also been working as a research assistant for Dr. Magnus Mfoafo-M'Carthy on a SSHRC-funded project titled "We matter: Exploring the Psychosocial wellbeing of newcomers amid COVID-19 in Southern Ontario."

Nelson's dissertation focuses on the experiences of international students in British Columbia and Ontario. In this case study, he examines universities and colleges' role in delivering integration and retention supports to international students. As Canada's intake of international students continues to rise, it is crucial to provide them with adequate support. However, since international students are considered "temporary immigrants," they are often excluded from federal and provincially funded supports, and they rely heavily on their institutions' assistance. This project aims to inform universities, colleges, local organizations, and governments of the challenges and opportunities international students encounter during and after their studies. The project uses in-depth, virtual interviews with key informants and international students in both provinces. Research findings will assist in the development of services, strategies, and policies aimed at enhancing the experiences of international students studying in Canada, which could increase permanent residency rates.



Migrant lives beyond policy categories: International students' lived experiences of temporariness and transition in Canada

PI: Dr. Marshia Akbar

Co-applicants: Professor Anna Triandafyllidou and Professor Jill Hanley.

Funding: SSHRC Insight Development Grants, Timeline: June 2022-May 2024.

Canada's high-skill migration stream has been increasingly dominated by the two-step system in which the first step involves admission of migrants with temporary status and the second entails their transition from temporary to permanent status through federal and provincial immigration programs. Canada's immigration policy recognizes international students as a vital source of highly skilled workers and ideal candidates for this two-step system. The path from temporary to permanent residence and social and economic integration should be reasonably easy for international students with a Canadian education, work experience, and proficiency in at least one official language. Instead, data and information on their low transition rates, underemployment, and lower median income after graduation compared to Canadian-born counterparts reveal a huge gap between policy assumptions and actual experiences. This gap has grown during the ongoing pandemic, revealing their vulnerable and precarious migration status and employment conditions.

To better understand international students' transition and integration challenges, we must acknowledge that most go through not two but three steps of the immigration process, from study permit to postgraduate work permit, and then to permanent residency. This lengthy process involves not just migration transitions but also life transitions from school to work, and often changes in family status which has important gender and intersectional dimensions. The project examines this three-stage migration and integration process of international students analyzing gender and intersectional identities, life-course events, and institutional policies. Focusing on the life stories of three groups, study permit holders, post-graduate work permit holders, and those who obtained permanent residency, will provide a holistic understanding of international students' temporariness and their pre-and post-transition experiences. The study contributes to theorizing concepts of time, life course, and transition in migration, looking at interactions between migration status, specific life phases, employment, and social and institutional factors (such as migration policies, roles of educational institutions, and labour market barriers).

The IDG study will contribute original and evidence-based knowledge on the temporary status and the transition of international students. For more information regarding this study, please [click here](#).

Community Partner

Trisha Scantlebury has held several positions within United Way Greater Toronto (UWGT) since joining the organization in 2016. She started as a Research and Policy Specialist with the Peel Newcomer Strategy Group (PNSG), a project of UWGT that is funded by Immigration, Refugees & Citizenship Canada, Region of Peel, and



While at PNSG, Trisha contributed to evaluation initiatives which assessed the needs of newcomers, immigrants, and refugees in Peel region. She also conducted research and made policy recommendations to augment service coordination and delivery to immigrant populations, including international students.

In early 2020, Trisha was seconded to the role of Manager, Strategic Initiatives working on the Inclusive Local Economic Opportunities initiative, where she investigated neighbourhood revitalization case studies across jurisdictions to establish the evidence base for several pilot projects that UWGT would later launch in the east end of Toronto. From there Trisha transitioned to the Research, Public Policy and Evaluation team as manager before being promoted in 2021 to her current role of Senior Manager on the same team.

In her current role, Trisha conducts research related to several of UWGT's priority areas, including housing stability, income stability, resident engagement, and the supporting the community services sector. She led and contributed to Vertical Legacy: The case for revitalizing the GTA's rental tower communities and Building Inclusive Communities: Learning from Programs and Policies that Work research studies.

Trisha holds a Master's degree in Sociology and International Development from the University of Guelph. In 2022, she was a part of the Maytree Policy School cohort, advancing her knowledge of and commitment to policy advocacy strategies.

Announcements

- **Scholars of Excellence Edition: De-centring the governance and knowledge production on migration, Wed. Apr. 19, 2023, 10 AM - 4:15 PM EDT Hybrid.** Visit the [event webpage](#) for abstracts and program details.
- The BMRC webinar entitled *Are International Students Disposable Workers?* which took place on January 26, 2023, is now available on our [website](#) and [YouTube channel](#).
- **Pathways to Prosperity 2023 Virtual Workshop Series**
 1. **April 18, 2023 at 1:00 PM ET** - L'Ontario français expliqué par les immigrantes et les immigrants: Une recherche-action. Chair: Luisa Veronis, Université d'Ottawa
 2. **April 20, 2023 at 1:00 PM ET** - Mind the Gap: Securing Inclusive Pathways for International Students. Chair: Guliz Akkaymak, World Education Services (WES)

The series is being offered at no cost to the Pathways to Prosperity 2022 National Conference registrants and for a small fee to those who did not register for the conference. [Click here to register](#).

- **Coming Soon:** *The implementation of policies for welcoming migrants in Montreal neighbourhoods: the study of the Vivons nos quartiers initiative*, by Gabrielle Desilets, Anna Goudet, and Chedly Belkhodja. This is the English translation of a Vivons nos quartiers article, entitled *La mise en œuvre des politiques d'accueil des migrants à l'échelle des quartiers montréalais : l'étude de l'initiative Vivons nos quartiers*, written by Gabrielle Desilets and Anna Goudet, and published by [Lien social et Politiques](#).

Other Important Information-Autre Information Importante

BMRC-IRMU Online Platforms:

[Website](#)

[Twitter](#)

[Facebook](#)

[YouTube](#)

For more information about this newsletter:

York University
4700 Keele St.
Kaneff Tower, 803
Toronto, ON M3J 1P3
416-736-2100 Ext 20544
bmrcirmu@yorku.ca

💡 Like this issue? [Forward it to a friend](#)



4700 Keele St, Toronto, ON M3J 1P3

<http://bmrc-irmu.info.yorku.ca> | bmrcirmu@yorku.ca | +1 (416) 736-2100

Copyright © 2016 Building Migration Resilience in Cities.

You are currently signed up to Company's newsletters as: [To unsubscribe click here.](#)

Subscribe

Past Issues

This email was sent to <<Email Address>>

Translate ▼

[why did I get this?](#) [unsubscribe from this list](#) [update subscription preferences](#)
BMRC-IRMU · 4700 Keele St, Toronto, ON · North York, On M3J 1P3 · Canada

