




[Trouble viewing images? View online version](#)

News and Updates. May 2023 - Issue # 50

 [Visit Website](#)

 +1 (416) 736-2100  
Ext 20544

## Migration and resilience in urban Canada-Immigration et résilience en milieu urbain



Hello Everyone,

In this final year of the partnership, we are concentrating on Knowledge Mobilization activities beginning with three important publications that are now available on the [website](#). A [Research Report](#) translates an article about the Vivons Nos Quartiers project that documented innovative ways that neighbours and neighbourhood institutions facilitated the settlement of newcomers in Montreal. The importance of linguistic capital for international students' resilience is the subject of the most recent [Research Digest](#). A new [Policy Preview](#) assesses how removing limits on international students' work hours will affect their well-being. Information about each publication has been distributed by IRCC to more than 800 subscribers through *Research at a Glance* as well as through the equally large BMRC-IRMU listserv. We look forward to receiving more proposals and plans for publications to ensure that each aspect of the partnership's research program is available to a broad audience.

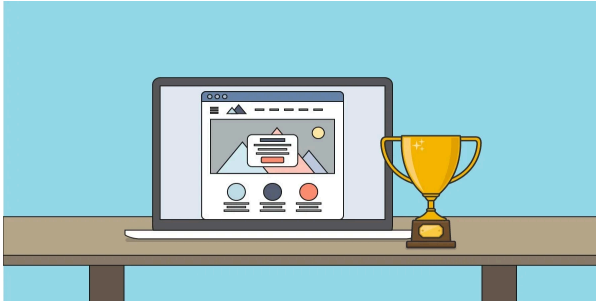
The final partnership meeting is being rescheduled since very few people were available in June. Watch for more news shortly. I appreciate everyone's patience as we navigate the complicated return to in-person activities.

To help financial administration in the final year of the partnership, please check the Steering Committee report for information about applications for travel funds, open access fees, and additional graduate support. The Secretariat is already requesting and compiling the information needed for the final [Partnerships Achievement Report](#). The information that has been submitted underscores the impressive scope of the partnership's accomplishments. Thank you for your earlier assistance with the contributions report that allows us to acknowledge and highlight the time and resources that support the partnership. Any missing contributions can be added, so we will be thrilled to receive additional information.

Summer is around the corner. Staff will be on vacation and reduced hours, so we appreciate everyone's patience with delayed responses. I hope everyone enjoys a wonderful and relaxing summer.

Valerie

## Knowledge Mobilization News



### List of research digest:

1. [Understanding the role of language and linguistic capital through English- and French-Speaking International Students' Experiences at a Bilingual University](#) by Luisa Veronis, Xiaohao Wu, and Rachel Walker.

### Policy Preview:

1. "[Removing Caps on International Students' Paid Work](#)", co-authored by Nelson Graham, Margaret Walton-Roberts, and Valerie Preston. This Preview is based on the webinar [Are International Students Disposable Workers?](#).

### Research Report:

1. [The implementation of policies for welcoming migrants in Montreal neighbourhoods: the study of the Vivons nos quartiers initiative](#) by Gabrielle Desilets, Anna Goudet, and Chedly Belkhodja. This is the English translation of a Vivons nos quartiers article, entitled *La mise en œuvre des politiques d'accueil des migrants à l'échelle des quartiers montréalais : l'étude de l'initiative Vivons nos quartiers*, written by Gabrielle Desilets and Anna Goudet, and published by [Lien social et Politiques](#).

### Call for Research Digests:

We would like to request the submission of *at least one* Research Digest for each project funded by BMRC.

Please email your Research Digest proposals to [bmrcirmu@yorku.ca](mailto:bmrcirmu@yorku.ca).

## Committees

### Steering Committee

In its May meeting, the Steering Committee discussed how to wrap up partnership activities in the next 11 months. The committee



and additional graduate support of \$3,000 per funded research project:

- **Submission of Requests for Approval to Executive Committee– July 1, 2023**
- **Submission of Claims for Reimbursement (Travel and Open Access) – November 1, 2023**
- **Funding for one-time-only additional graduate student support must end – December 1, 2023.**

These deadlines will enable the reallocation of any remaining funds.

Get to know our research projects and our researchers!



### **Future of the Settlement Sector**

By John Shields, Professor, Department of Politics and Public Administration, Toronto Metropolitan University

This research explores the immigrant settlement and integration sector in Ontario and Quebec in the context of the COVID-19 pandemic and its aftermath. The pandemic has had a profound impact on nonprofit migrant service providers straining their capacity to the limits, compelling a rapid shift to online service provision and the development of hybrid delivery models going forward, and reshaping relationships with government funders. There are many continuities and discontinuities between the experiences in the two provinces and many lessons to be learned. The embrace by the Federal Government of enhanced immigration levels as part of a post-pandemic economic recovery strategy has given additional importance to the settlement role of nonprofit migrant agencies. The Quebec Government's decision to reduce immigration levels for the province but continue to provide comparatively high levels of funding support for integration services offers an important point of comparison. Quebec's support for the extension of services for international students and temporary migrants also stands in contrast to IRCC's limitation to service coverage for permanent resident immigrant newcomers.

concertation des organismes au service des personnes réfugiées et immigrantes (TCRI) covering the period of September 2020 to September 2021. The Technical Reports of the surveys are available on the [BMRC website](#). While the focus of the research has been centred in Quebec and Ontario the findings have relevance for all parts of Canada and beyond. The settlement sector has demonstrated remarkable resilience through this period of crisis. As the immigrant settlement and integration sector evolves and shapeshifts into the future it is critical to better understand the dynamics and trajectory of this change. This research is making an important contribution to this goal. It should be noted that this work is a continuation of previous BMRC studies including "[ISAs: A Critical Review of the Literature through the Lens of Resilience](#)" (Riley Bushell and John Shields) and "[An Anatomy of Settlement Services in Canada: A Guide](#)" (Jessica Praznik and John Shields).

This study is co-led by Dr. Valerie Preston (York University) and Dr. John Shields.

For more information regarding this project, please [click here](#).



We are pleased to feature **Amirreza Farshchin**, is a Ph.D. candidate in the Department of Geography, Environment, and Geomatics at the University of Ottawa. He holds a bachelor's degree in urban planning and design from the University of Tehran and a master's in urban and regional planning from Tarbiat Modares University. Amirreza's master's thesis focused on infill development, a type of urban development that promotes sustainability by avoiding urban sprawl. Before embarking on his academic career in Canada, he worked for 10 years as a researcher at the Academic Center for Education, Culture and Research (ACECR). At ACECR, Amirreza worked on a wide range of research areas related to urban planning, from urban resilience to urban livability. Currently, he is a research assistant in the BMRC/IMRU project under the supervision of Dr. Brian Ray.

Amirreza's dissertation focuses on the experience of immigrants in the urban labour market, with a particular focus on large Canadian cities. He aims to examine the differences that these cities make in terms of the performance of immigrants over time. Each immigrant-receiving city in Canada has unique characteristics, including its historically rooted identity, settlement situation, institutions, and social and economic systems, which attract particular groups of immigrants. Each of these immigrant communities, with different sets of skills and preferences, has also created distinct industrial and employment structures in the local labour market over time. This makes each city unique in terms of social and economic dynamics that provide immigrants with different opportunities and functions in terms of economic integration. The contribution that immigrants have in these urban economies becomes more complex when we consider immigrants not as a homogenous group but as a very heterogeneous one in terms of the time of arrival, where they were born, gender, education, and the way that the intersection of these attributes in an immigrant is interpreted in the Canadian context.



## Fostering inclusive workplaces, resilient communities and protecting migrant rights in Canada's Emerging Cannabis Industry

**PI:** Dr. Deborah McPhee

**Co-applicants:** Dr. Francine Schlosser, Dr. Marcia Carvalho De Azevedo.

The legalization of recreational Cannabis in October 2018 in Canada saw a proliferation of licensed producers (LPs) in the early stages.

Ontario had the largest share of producers in the country, with more than 15 licensed marijuana growers located in southwestern Ontario, ranging from greenhouses and indoor growing facilities to processing plants and farms. With this came a 266 percent upsurge in jobs nationwide in the cannabis industry year-over-year, with half of those clustered in Ontario, mainly in Leamington. The need for labour was addressed by hiring migrants under the Temporary Foreign Workers Program from such places as Guatemala, Mexico, Thailand, and The Caribbean. Since these early beginnings, the industry has seen a drastic downturn with many TFW's being returned to their countries, yet there are still many remaining working in both legal entities, and sadly many in illegal entities. Much is known about the hazards of working on farms and greenhouses in Canada, but exposure to Cannabis and the dangers associated with it are not yet studied extensively. Cannabis workers are lumped into the same category as farm workers, despite the blaring differences.

The purpose of our research is to investigate migrant and domestic workers' lived experiences while working in the cannabis industry in the Leamington and Niagara Regions. We also wish to learn if health and safety has improved for them in their workplaces because of the requirements for employers that emerged because of the pandemic. Additionally, we want to understand what types of hazards they are exposed to daily. This will allow us to build on theory related to health and safety, specifically safety culture, safety leadership, and injury. This research might demonstrate the differences and similarities between the farm workers and cannabis, and lead to the appropriate remedies geared to this industry.

This research study presents us with an opportunity to inform various government levels on relevant public policy considerations to help keep the workers and industry safe. As an emerging industry, a complete understanding of the health risks is not yet understood and this remains an understudied field of inquiry.

If you are aware of any migrant or domestic cannabis workers in production who may wish to be interviewed (\$50), please contact Dr. McPhee at [dmcphee@brocku.ca](mailto:dmcphee@brocku.ca). Translators are available to conduct these interviews.

## Community Partner

We are pleased to feature **Nicole Watson**, Acting Manager of the Toronto Newcomer Office with the City of Toronto. Nicole holds a Master's degree in Sociology from Queen's University, and a Honours BA in Psychology and Sociology from York University.



Nicole first joined the Toronto Newcomer Office in 2014 as a Community Development

Officer, championing the first ever Toronto Newcomer Day and the Access TO policy for undocumented Torontonians.

In 2020 during the City of Toronto's pandemic responses efforts Nicole was deployed to the Food Security Team at the City's Emergency Operation's Centre where she coordinated the distribution of more than 320,000 prepared meals and worked with the Toronto Office of Partnerships to leverage over \$2M in donations to support community organizations.

In 2022, prior to returning to the Toronto Newcomer Office, Nicole was a part of the City of Toronto's inaugural Policing Reforms Team where she was instrumental in the development and implementation of the Toronto Community Crisis Service a new alternate approach to responding to someone in crisis that focuses on health, prevention and well-being.

This past April 2023 Nicole was honoured to receive the City Manager's Award for the Toronto Newcomer Office's efforts to address the urgent needs of people fleeing the conflict in Ukraine. This award is presented annually to City teams that achieve the highest standards of excellence. Nicole also received this award in 2016 for her work in establishing the Refugee Resettlement Program in response to Syrian refugee resettlement.

Outside of work Nicole proudly served on the Board of Directors for Planned Parenthood Toronto for seven years where she led policy and program interventions that focused on equitable access for LGBTQ BIPOC youth. Through her ongoing work with the Toronto Newcomer Office Nicole continues to affirm a strong commitment to social justice, equity, diversity, Truth and Reconciliation, and anti-racist/anti-oppressive practice.

## Announcements

- BMRC is delighted to announce the release of:
  - a Research Digest entitled [Understanding the role of language and linguistic capital through English- and French-Speaking International Students' Experiences at a Bilingual University](#) by Luisa Veronis, Xiaohao Wu, and Rachel Walker.
  - a Policy Preview on "[Removing Caps on International Students' Paid Work](#)", co-authored by Nelson Graham, Margaret Walton-Roberts, and Valerie Preston. The Preview is based on the webinar [Are International Students Disposable Workers?](#).
  - a Research Report entitled, [The implementation of policies for welcoming migrants in Montreal neighbourhoods: the study of the Vivons nos quartiers initiative](#), by Gabrielle Desilets, Anna Goudet, and Chedly Belkhodja. This is the English translation of a Vivons nos quartiers article, entitled *La mise en œuvre des politiques d'accueil des migrants à l'échelle des quartiers montréalais : l'étude de l'initiative Vivons nos quartiers*, written by Gabrielle Desilets and Anna Goudet, and published by [Lien social et Politiques](#).
- Given Prof. Valerie Preston's work and expertise in immigration and housing, she was invited to provide her expert opinion on "a recent Toronto council decision to allow construction of multiplexes across city neighbourhoods which had been dominated by single-family homes" for CBC News. To read the article, please [click here](#).



- The third installment of [The Line Crossed Us: New Directions in Critical Border Studies conference](#) is coming up **June 8-9, 2023**. The event is *free* to attend and will be hosted entirely online in Mountain Daylight Time (UTC-6). Full schedule and any updates [here](#). Register for your free ticket and for the two public events [here](#).
- [Understanding Poverty Declines among Immigrants and Their Children in the United States](#), a [Brief](#) by Jeanne Batalova and Michael Fix.

#### New Book Releases:

- [Handbook on Migration and the Family](#). Elgar Handbooks in Migration. Edited by Johanna L. Waters, Professor of Human Geography, Department of Geography, University College London, UK and Brenda S.A. Yeoh, Professor of Social Sciences, Department of Geography, National University of Singapore, Singapore.
- Coming soon: [Canada-Chile Solidarity, 1973–1990 Testimonies of Civil Society Action](#), Liisa L. North (Editor).

## Other Important Information-Autre Information Importante

#### BMRC-IRMU Online Platforms:

[Website](#)

[Twitter](#)

[Facebook](#)

[YouTube](#)

#### For more information about this newsletter:

York University  
4700 Keele St.  
Kaneff Tower, 803  
Toronto, ON M3J 1P3  
416-736-2100 Ext 20544  
[bmrcirmu@yorku.ca](mailto:bmrcirmu@yorku.ca)

💡 Like this issue? [Forward it to a friend](#)



[Subscribe](#)

[Past Issues](#)

[Translate](#) ▼



4700 Keele St, Toronto, ON M3J 1P3

<http://bmrc-irmu.info.yorku.ca> | [bmrcirmu@yorku.ca](mailto:bmrcirmu@yorku.ca) | +1 (416) 736-2100

Copyright © 2016 Building Migration Resilience in Cities.

This email was sent to <<Email Address>>

[why did I get this?](#) [unsubscribe from this list](#) [update subscription preferences](#)

BMRC-IRMU · 4700 Keele St, Toronto, ON · North York, On M3J 1P3 · Canada