



Caitlin Mullin, Director Connected Minds
YRC Info Session
York University
July 17th, 2024

*Institutional partner
Partenaire institutionnel*



Connected Minds:
Neural and machine systems
for a healthy, just society

Esprits Branchés : Systèmes
neuronaux et systèmes
machines au service d'une
société saine et juste

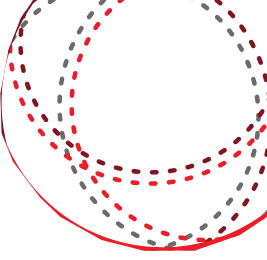


**CANADA
FIRST**
RESEARCH
EXCELLENCE
FUND

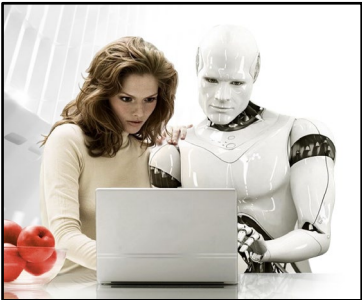
**APOGÉE
CANADA**
FONDS
D'EXCELLENCE
EN RECHERCHE



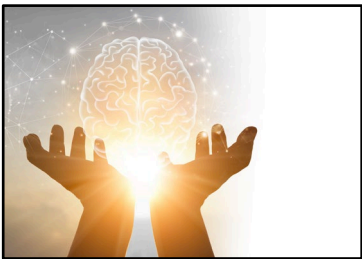
New technologies are creating a 'techno-social collective'



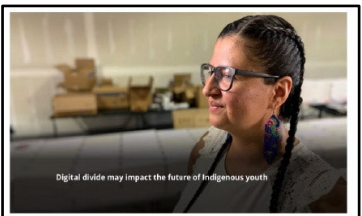
Changing the way we communicate with each other



Introducing artificial agents to our social networks



Opening the possibility to direct brain-machine interfaces



Sometimes producing unintended or negative effects, especially for vulnerable communities

The Challenge



- Siloed research
- Lack of diversity
- Reactive research

The *Connected Minds* Program:

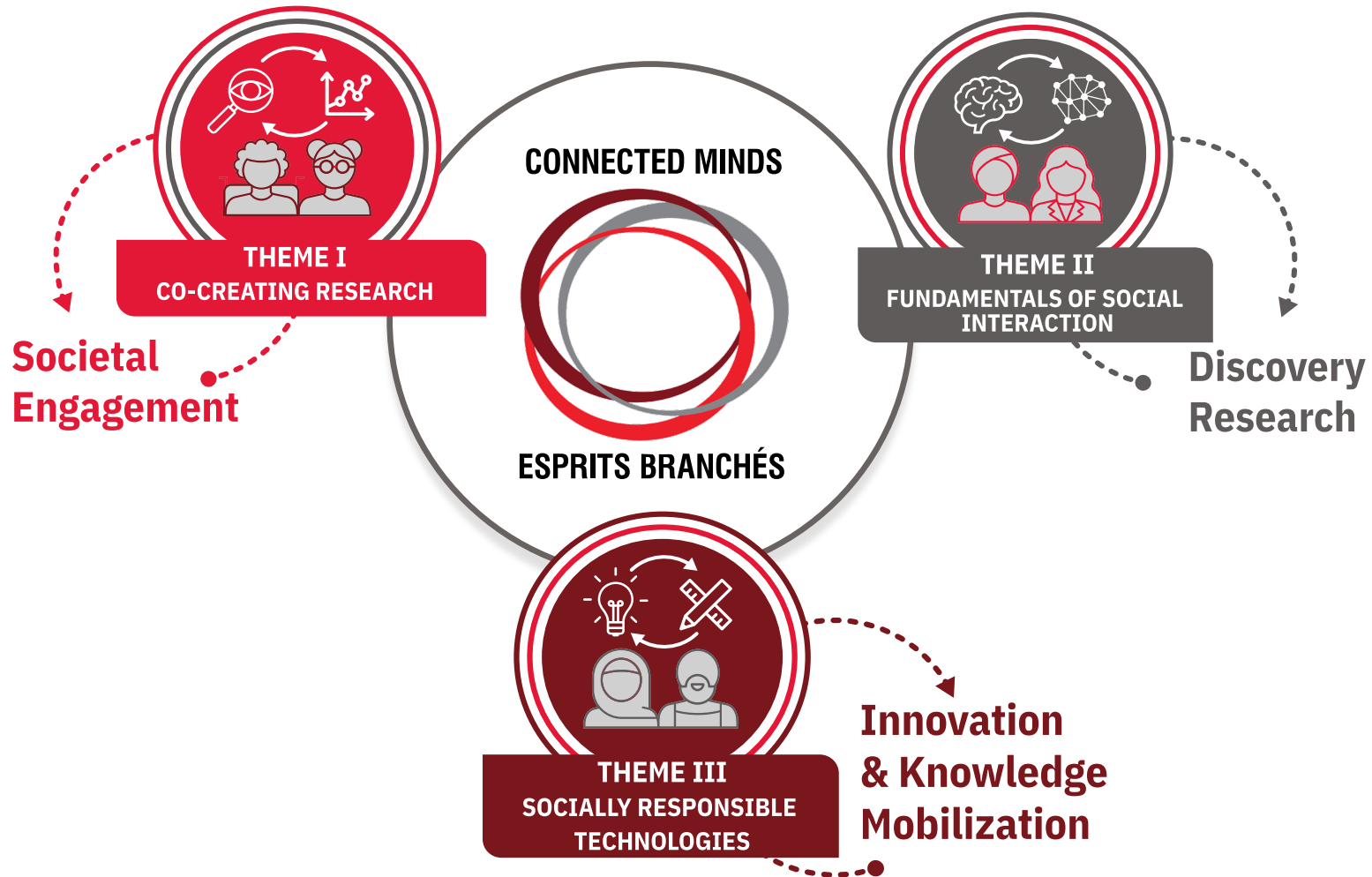
A 7-year research program based at York and Queen's Universities, beginning March 2023, supported by a \$105M grant from the Canada First Research Excellence Fund (CFREF) totaling \$318M

Our Mission:

“To co-create and co-lead socially responsible, community-engaged research that optimizes the benefits and mitigates the risks of the new techno-social collective – for all members of society, especially the most vulnerable”



Transformational Change: **The Approach**



Our Research Goals:



1) Understand the interplay of humans and intelligent tech



2) Predict how new tech will disrupt society



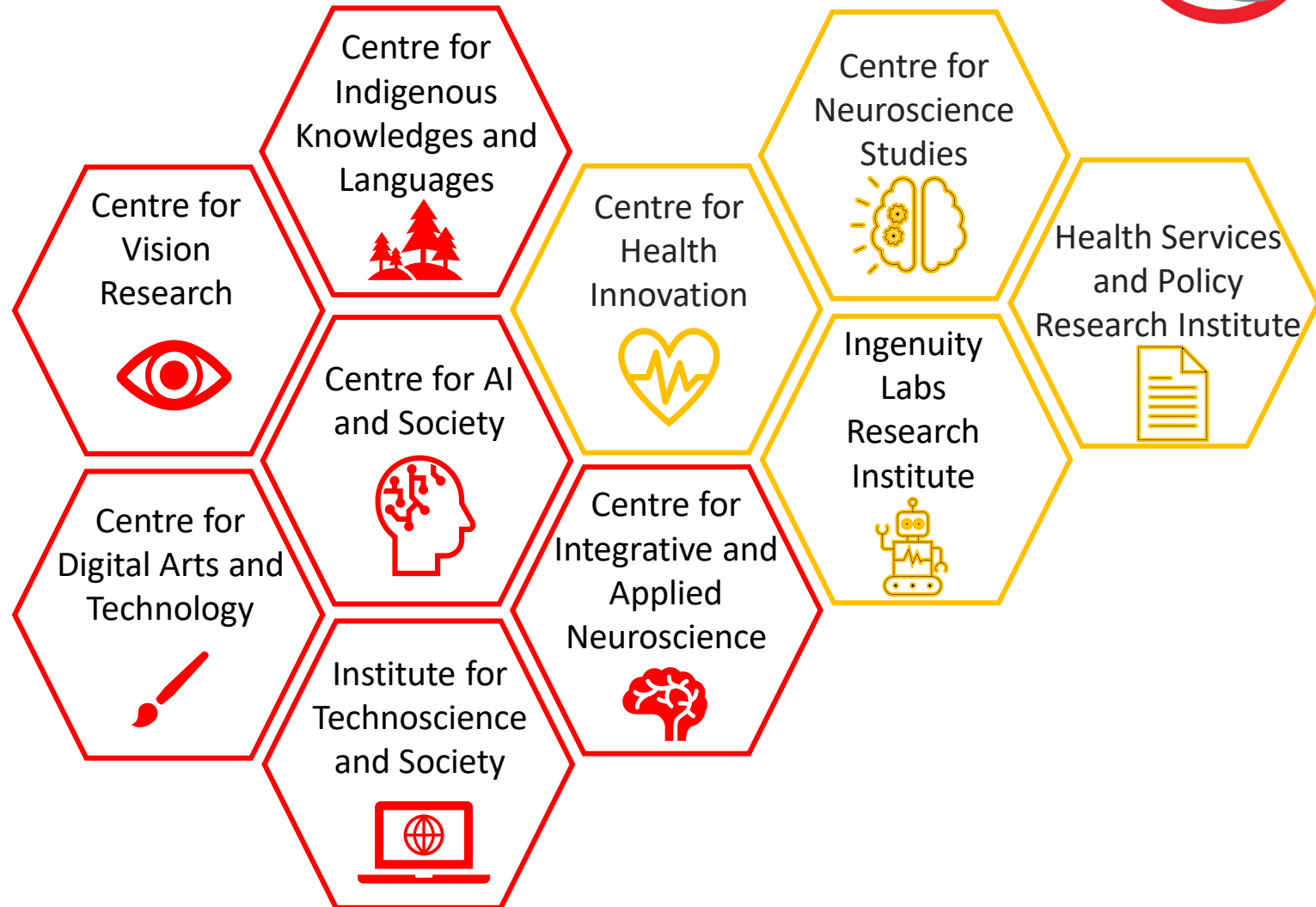
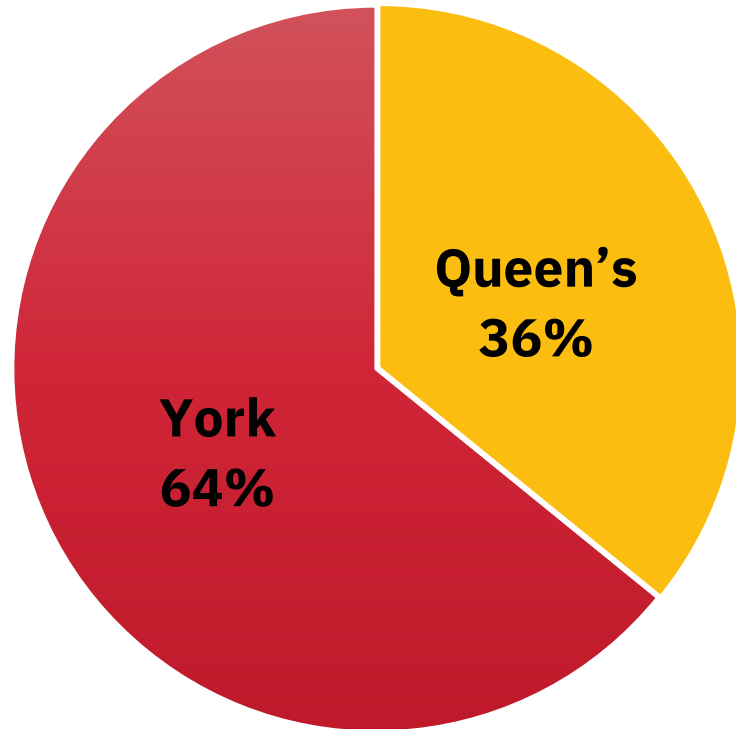
3) Apply predictions to drive better tech R&D

<https://www.yorku.ca/research/connected-minds/general-information/>

Who is Connected Minds? Our Membership



Total Members 200+:



Becoming a member: Phase 1



ELIGIBILITY:

You must be a member of any of the below research centres/institutes, and/or identify as a Black or Indigenous scholar.

- Centre for Artificial Intelligence and Society
- Centre for Indigenous Knowledges and Languages
- Centre for Integrative and Applied Neuroscience
- Institute for Technoscience and Society
- Sensorium
- Centre for Vision Research
- VISTA

• APPLICATION GUIDELINES:

- Upload a copy of your CV.
- Indicate which of the above research centres/institutes you are a member of and/or if you identify as a Black or Indigenous scholar.
- List 3 keywords/phrases that describe your area(s) of interest.



Becoming a member: Phase 2

ELIGIBILITY:

- **You must be nominated by a registered member of Connected Minds**

APPLICATION GUIDELINES:

- Upload a copy of your CV.
- List 3 keywords/phrases that describe your area(s) of interest.
- Describe how your academic credentials fit within the Connected Minds goals.
- Describe what your expected/proposed contributions to Connected Minds will be.
- Describe what benefits you anticipate from being part of Connected Minds.
- Complete a [self-identification survey](#).
- In addition to the above, the Connected Minds member supporting your application must email a signed letter of support/nomination directly to applyconnectedminds@yorku.ca.

<https://www.yorku.ca/research/connected-minds/apply-for-membership/>



Upcoming membership process

Quarterly Review:

- Next deadline is August 9th, 2024
- Review process taking place in mid-August.
- Applicants will be notified of the results by the end of August



Expected Member Engagement:

- Participation in the life of the Connected Minds Program and attending associated retreats, conferences, business meeting, etc.
- Willingness to participate on Connected Minds operations committees and task forces.
- Completion of an on-line progress report providing required materials for CM's annual report upon request.
- Completion of self-identification report.
- Permission for Connected Minds to display your photo and brief description of research area on our website.



Connected Minds:
Neural and machine systems
for a healthy, just society

Esprits Branchés : Systèmes
neuronaux et systèmes
machines au service d'une
société saine et juste



**CANADA
FIRST**
RESEARCH
EXCELLENCE
FUND

**APOGÉE
CANADA**
FONDS
D'EXCELLENCE
EN RECHERCHE



Queen's
UNIVERSITY

