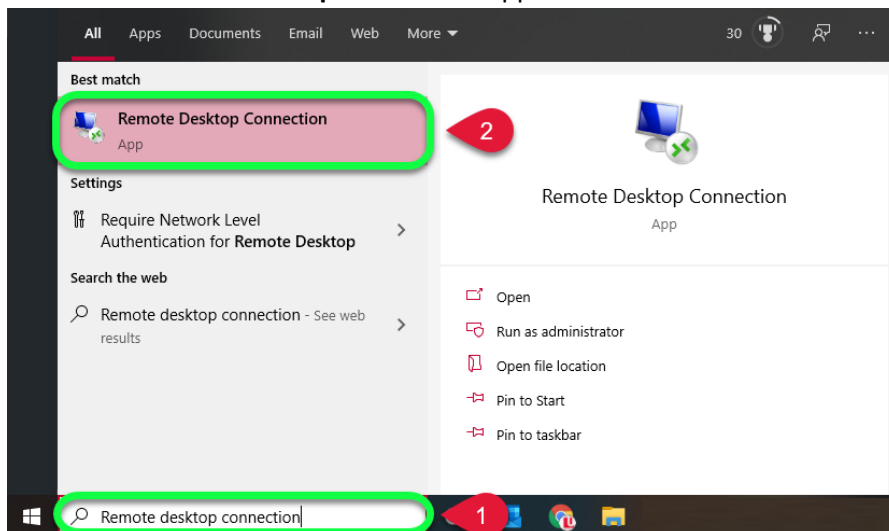


Before you begin:

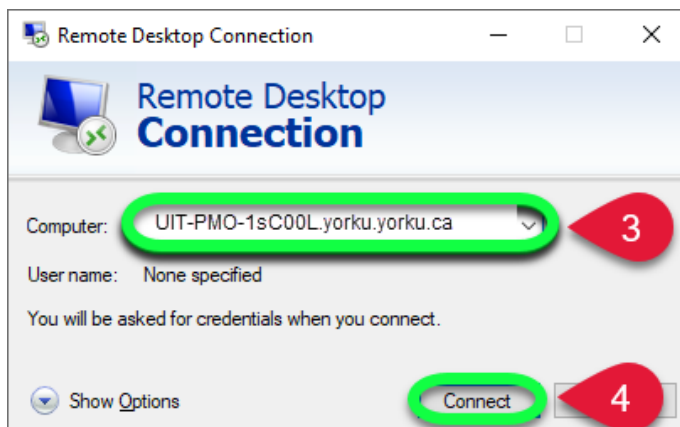
1. You will need to **restart your work computer**
2. **Log in** to your work computer, and [record your work computer's name](#)
3. **Log out** of your work computer but **leave it powered on**
4. Make sure you [connect your home computer to York's VPN service](#)

Get started:

1. In the search bar at the bottom left of your desktop, type **Remote Desktop Connection**
2. Select the **Remote Desktop Connection** app

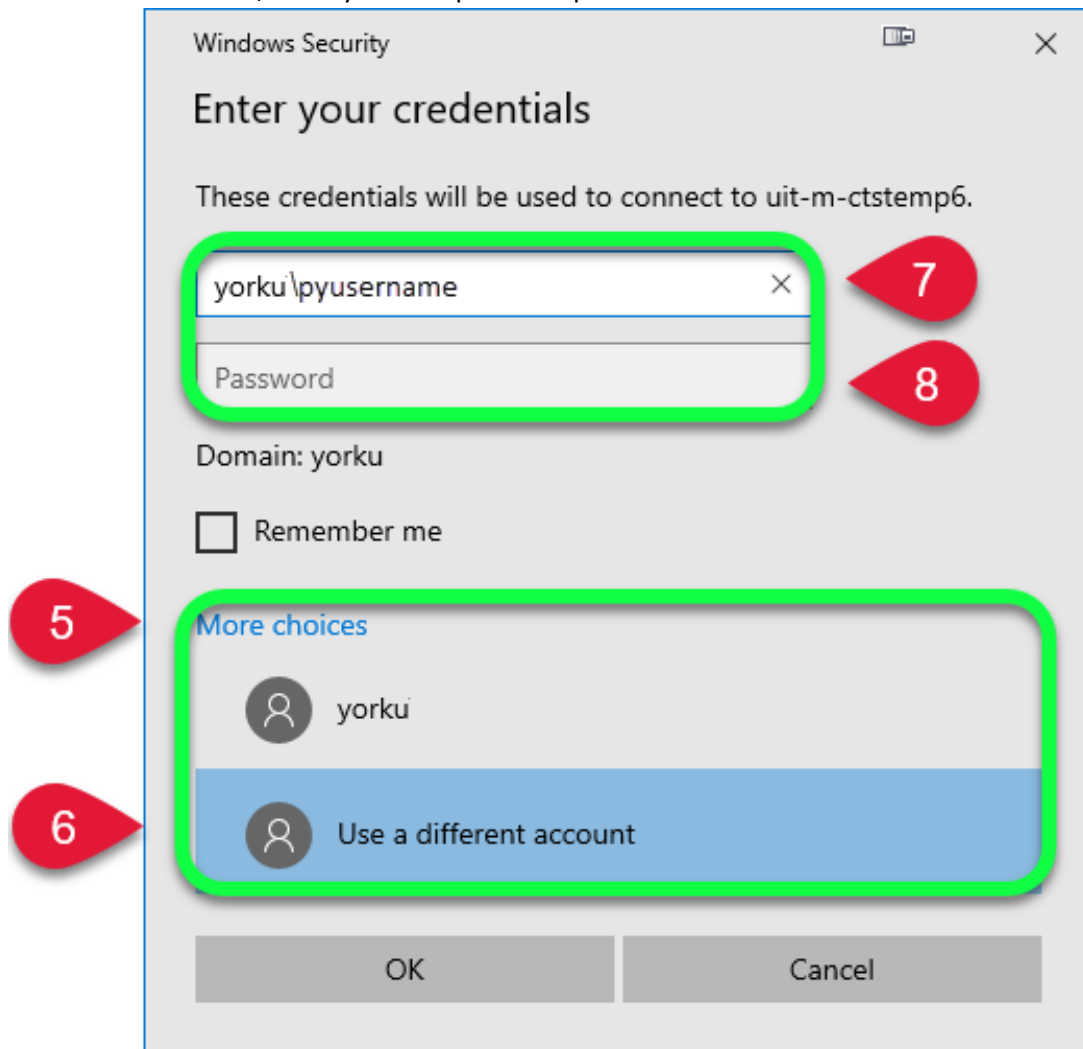


3. Once the Remote Desktop Connection tool launches, take your work computer's name and add "**yorku.yorku.ca**" to it, then enter that into the **Computer** field.
 - a. For example, if your work computer name is **UIT-PMO-1sC00L**, the value you'd enter into the **Computer** field would be **UIT-PMO-1sC00L.yorku.yorku.ca**



4. Click **Connect**

5. Once you're connected, a popup will appear. Click on **More Choices**
6. Next, select **Use a Different Account**
7. In the username field, type: **yorku**[your Passport York username]. Example: Jon Snow would type: **yorku\jsnow**
8. In the Password field, enter your Passport York password



9. Click **OK**

Your home computer is now connected to your work computer!